

CC Pilot™ XS

User Manual and Reference Handbook

CC Pilot™ XS Basic
CC Pilot™ XS Extended
CC Pilot™ XS All-Integrated



Table of Contents

Introduction.....	4
Identification	4
Care.....	4
Environment and Environmental Tolerance.....	5
Cleaning.....	5
Overview	6
CC Pilot™ XS Front Face	7
CC Pilot™ XS Rear Side.....	7
Set-up and configuration.....	8
Preliminary configuration.....	8
Basic operations	9
Function of the Display's Push-buttons	9
Starting Up.....	9
Status Indicating Function.....	10
Shutting-Down.....	10
Touch screen.....	10
Reset of the unit.....	11
Module description.....	12
Storage memory.....	12
CAN	12
Ethernet.....	12
USB	13
COM	13
Digital Inputs.....	13
Audio	13
Video	13
GPS	13
GPRS/GSM.....	14
Bluetooth.....	14
Connectors.....	15
Connectors	15
Installation	21
Placing and installing of the unit and peripherals.....	21
Software.....	27
Operating System.....	27
Getting Started with Windows CE.....	27
XS Settings.....	32
CC Video.....	36
Microsoft ActiveSync.....	38

Program installation.....	40
Connect to the GPS receiver.....	40
Creating a dial-up connection with the GSM/GPRS modem.....	40
Using the FTP server.....	42
Using Telnet server.....	42
Specifications	43
Computer Core.....	43
Interfaces.....	43
Power Supply.....	44
Display.....	44
GPS	44
GSM/GPRS	45
Bluetooth.....	45
Environmental Tolerance	46
Weight and Dimensions	47
Technical Support.....	51
Glossary.....	52
References.....	54
Trade Mark, etc.	54
Index.....	55

CC Pilot™ XS

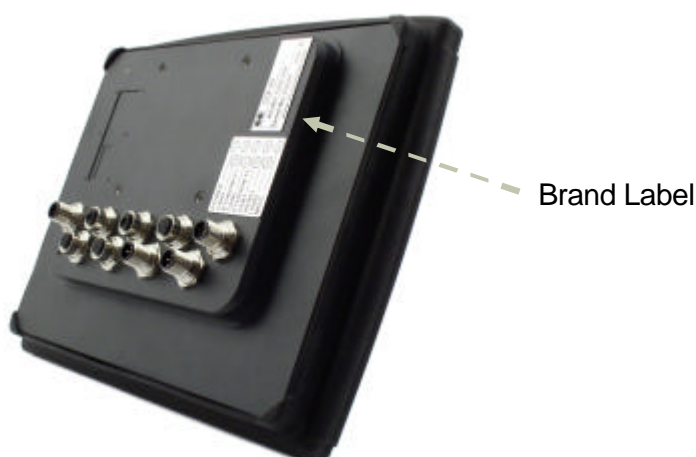
Introduction

In this user manual and reference handbook you, as a user, a reseller or system integrator, will find important information about the CC Pilot™ XS. The handbook will guide you and broaden your knowledge about this onboard computer's technical possibilities and advantages. Described herein are the CC Pilot™ XS Basic, CC Pilot™ XS Extended and CC Pilot™ XS All-Integrated versions.

This material is copyright protected © 2005 CC Systems AB. All rights reserved.

Identification

There is a brand label on the back of the CC Pilot™ XS. On the brand label there are numbers which identify your unique computer. During service and other contact with the supplier it is important to be able to provide these numbers.



Care



- » During welding or other service, on the vehicle or machine where the CC Pilot™ XS is installed, which can damage your CC Pilot™ XS, all cables shall be disconnected from your computer before such work begins.
- » The CC Pilot™ XS shall only be mounted and serviced by authorised personnel. If the unit is opened by unauthorised personnel, the normal guarantee will cease to be valid.
- » Scratches, or in the worst case damages, to the display occur easily if it comes in contact with a sharp edge or hard material. In order to increase the longevity of the screen, this is naturally something which should be avoided.
- » The unit can be damaged if it becomes too hot. Therefore, do not cover the unit by laying things on it, like for example, hanging a jacket or other clothes on it. For more information, see the chapter entitled Installation.

- » Consider traffic safety when the CC Pilot™ XS is installed and whenever it is used. CC Systems AB does not recommend that CC Pilot™ XS or its accessories be used actively by the driver when a risk of injury to people, or damage to property, is present.
- » Be advised that CC Pilot™ XS draws power from the vehicle battery. This can result in the inability of the vehicle to start if the onboard computer has been on for a period of time without the vehicle motor running.

Environment and Environmental Tolerance

The CC Pilot™ XS has been designed to cope with tough environmental demands. Strict tests have been conducted on the unit in order to ensure that it fulfils the expectations of a rugged unit. Much work has been performed to choose and design internal components so that they, in the best possible way and under all circumstances, provide you with a dependable and user-friendly working instrument. In the section Specifications, a list of standards can be found according to which the CC Pilot™ XS has been tested and approved.

The CC Pilot™ XS shall preferably be placed under a roof in order to prevent exposure to direct water contact. It is also important that it is mounted securely on a stand or the like to inhibit the unit from moving and thereby becoming damaged, damaging the vehicle and/or people during, for example, a traffic accident.

Cleaning

To ensure proper and reliable functionality over time, the unit shall be wiped cleaned of dirt and dust. Use a suitable light damp rag to clean the unit.



Never use alkaline, alcoholic or other chemicals for cleaning which can damage the unit.

CC Pilot™ XS

Overview

The CC Pilot™ XS is a compact, robust and versatile onboard computer for Windows CE 5.0. It is equipped with, among other things, a pressure-sensitive touch screen as well as a large number of connection alternatives such as CAN, COM, Ethernet and USB. The CC Pilot™ XS comes in three different versions:

- Basic – the essential functions for a on-board computer
- Extended – Adds Video and Audio functionality
- All-Integrated – Adds GPS and GSM/GPRS abilities

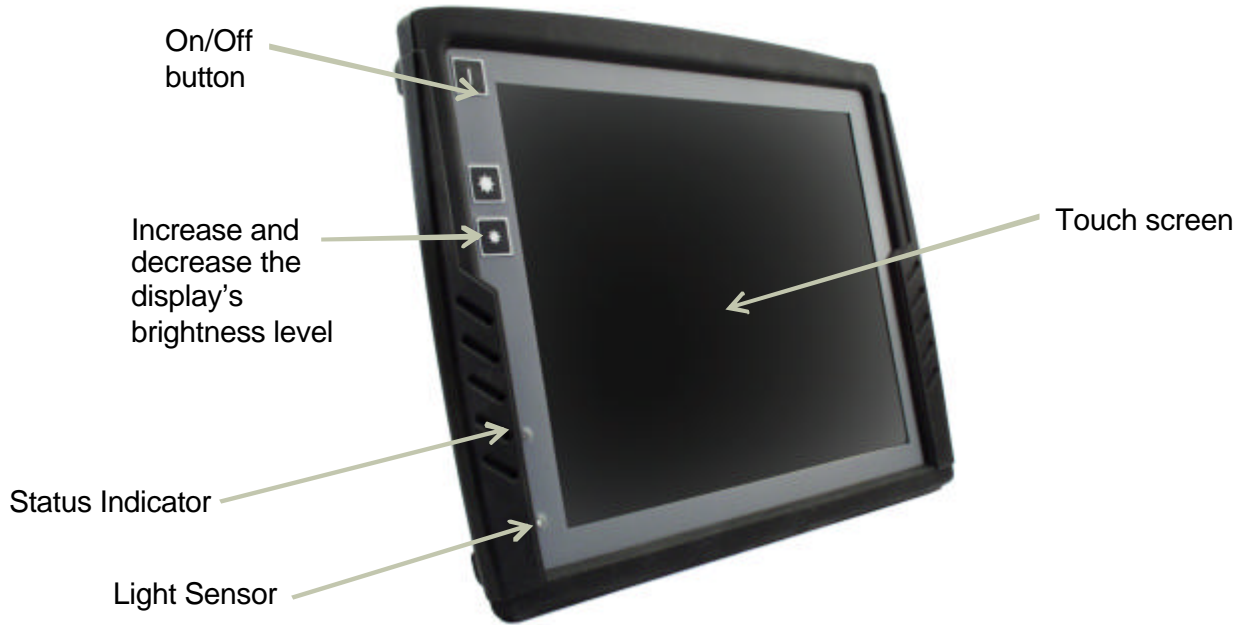
The processor in the CC Pilot™ XS is an Intel XScale® processor with a clock frequency of 533 MHz. The characteristics for this processor type are its low current draw and heat generation in proportion to its performance. Together with a non-rotating hard disc, the CC Pilot™ XS is completely without fans or other moving parts. With this solution the CC Pilot™ XS becomes nearly insensitive to vibrations and withstands rough environments.

Through its high performance and generous connection alternatives the CC Pilot™ XS can be used in a multitude of working environments, such as controlling a machine or a vehicle's various functions. The CC Pilot™ XS can also be used as a PLC system in accordance with IEC 61131-3 (CoDeSys). In this way it is possible to manufacture complete CANopen based control system built upon the CC Pilot™ XS.

The CC Pilot™ XS All-Integrated version includes built-in GPRS/GSM-communication, which allows mobile internet access and e-mail, as well as GPS, which allows map support, it makes an excellent fit as a mobile client for use in transportation and logistics.

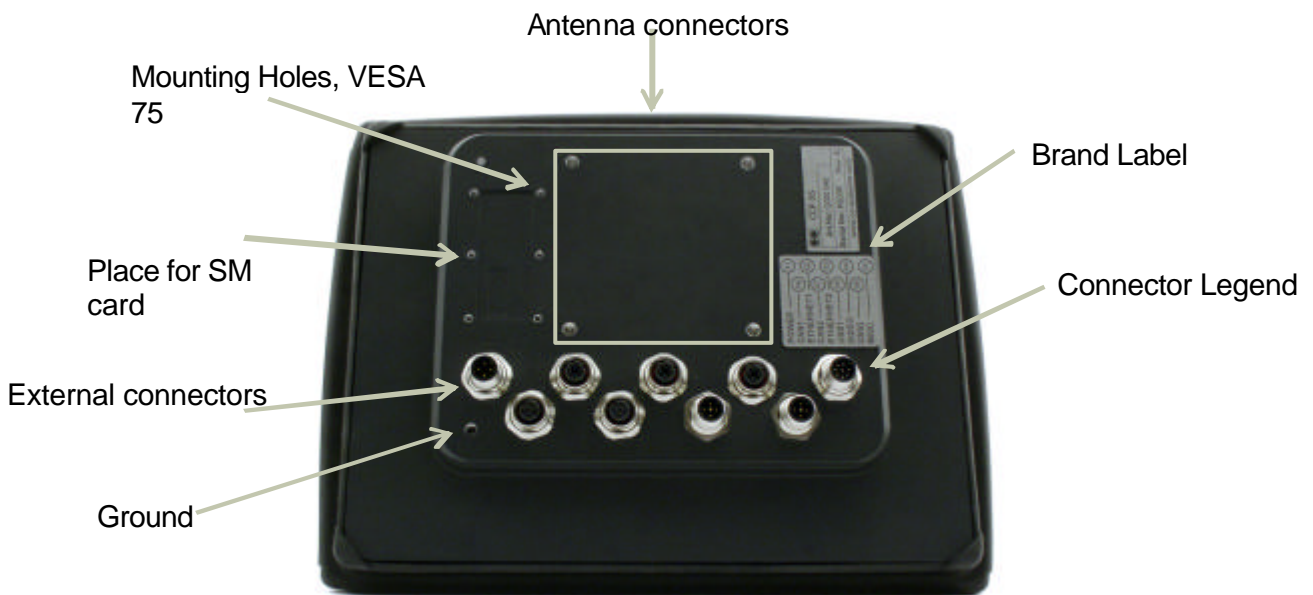
CC Pilot™ XS Front Face

On the front face of the CC Pilot™ XS there are the touch screen, a button for switching the unit on/off as well as buttons for adjusting the screens brightness level. Furthermore, there is a status indicator and a light sensor to aid in adapting the screen's brightness level.



CC Pilot™ XS Rear Side

On the rear side of the CC Pilot™ XS there are the external connectors, which are described in more detail in the chapter entitled *Connectors*. On the rear side, there are also mounting holes for fasteners in accordance with VESA 75.



CC Pilot™ XS

Set-up and configuration

The CC Pilot™ XS uses Windows® CE 5.0 as operating system, which enables the use of a multitude of applications in various fields of interest. Even though CC Pilot™ XS has been designed to handle greater stress and a harsher surrounding environment than ordinary computers, it is built to be as simple as possible to handle. For instance, through turn-key functionality, which means that the CC Pilot™ XS starts up automatically when the key is turned in the ignition switch.



CC Systems AB can not guarantee the functionality for your CC Pilot™ XS in the case where the supplied software is replaced or completed with other software which has not been recommended by CC Systems AB or your supplier. Furthermore, CC Systems AB can not guarantee the functionality of external devices, connected to your CC Pilot™ XS.

Preliminary configuration

Depending on which particular situation your CC Pilot™ XS is being used; there can be a need to perform an initial system and program installation. This can be true especially with pre-installed software on the on-board computer or in the case where you yourself installed new software. You have received instructions from you supplier and we recommend that you abide by them in order to configure your system before use.

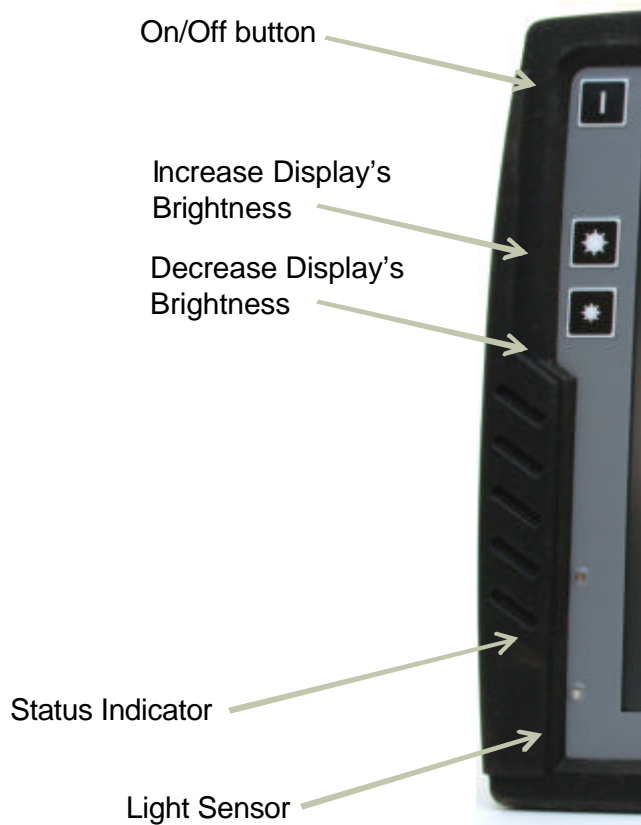
If you have received separately-supplied software that shall be installed in the onboard computer, the CC Pilot™ XS may require synchronisation with a PC to install the program. See the chapter entitled Software for more information about how you connect to the CC Pilot™ XS.

CC Pilot™ XS

Basic operations

This section covers basic operation of the CC Pilot™ XS unit such as start-up shut down. For more information on usage please also see the Software chapter.

Function of the Display's Push-buttons



In the top left corner of the CC Pilot™ XS there are three buttons:

On/Off Button

The unit starts up or is shut down by pressing this button. For more information about starting up and shutting down the CC Pilot™ XS see the chapters called Starting Up and Shutting-Down.

Brightness

There are two buttons to gradually increase or decrease the display's brightness.

Starting Up

Start the unit by pressing and releasing the On/Off button. The status indication LED will start flashing indicating that the unit is starting up

The unit can also be started by using a turn key functionality controlled from the power connector on CC Pilot™ XS. For more information see the chapter

Connecting the Power Supply.

Status Indicating Function

On the front side of the CC Pilot™ XS there is a status indicator, a red LED, which is used to indicate different states for your CC Pilot™ XS during start up.

- » A 1Hz **flashing red light** indicates that the unit is starting up normally.
- » A **continuous red light** indicates something is wrong.
- » A **quickly-flashing red light** means that the unit's disc is blank and needs to be loaded with an operating system.

When the operating system starts, the LED stops flashing. From the operating system, the LED can be used to show more messages. For more information, refer to the operating system's manual and also to the respective manual for each program installed.

Shutting-Down

To ensure that data does not get lost or the hard disk become corrupt, it is recommended that all programs are closed before the unit is shut down.

There are three ways to turn off CC Pilot™ XS:

- » By pressing the On/Off button on the display.
- » By selecting Suspend on the start menu of Windows CE
- » By releasing the power connectors On/Off signal, i.e. using the turn key functionality

When performing any of above the system will CC Pilot™ XS start to shut down. In order to help prevent data loss when the CC Pilot™ XS is shut down, there is a safety mechanism in the system, which prevents the unit from shutting off before data has been saved. This requires that the software which is running supports this.

Forced Shut Down

If the computer is not responding, press and hold the On/Off button for five seconds in order to perform a forced shut down off the onboard computer.



Note that any information which was not saved will now be lost.

Touch screen

The CC Pilot™ XS is fitted with a touch screen which gives the opportunity to provide a very easy-to-use HMI (Human Machine Interface) for the user. The first time the touch screen is touched will cause a calibration routine to run. If needed, Calibration can also be started manually via the control panel: start *stylus*, chose the tab *Calibration* and then press the button *Calibrate*. Calibration can be cancelled by pressing the escape key on a connected keyboard.

Be thorough with this calibration so that your touch screen will have the best possible performance. You should use the same object (finger, stylus) during calibration which you think you will use later.



Don't use sharp or pointed objects on the touch screen since these can damage or scratch it, which can seriously degrade its functionality.

Reset of the unit

Using the On/Off button in combination with the brightness buttons it is possible to perform three modes of advanced start ups, forcing registry clean and formatting of Compact Flash.



Make sure to back up any critical data before performing the steps below.

Clear the registry

1. Turn off the unit
2. Press the Power On button
3. Press the backlight increase key for about 2 seconds and the LED turns red
4. Press the backlight decrease key once
5. The LED starts to blink with a rate of 1Hz
6. Wait until the unit has finished its booting sequence
7. The registry is now restored

Format the Compact Flash (Hard Disk) storage memory

To format the Compact Flash perform the step 3 and 4 described in cleaning the registry 2 times, i.e. press increase, decrease, increase and decrease keys. The disk will get the format FAT32 and TFAT.

CC Pilot™ XS

Module description

This section deals with the various parts which make up the CC Pilot™ XS and how they are used. Depending on your CC Pilot™ XS version Basic, Extended or All-Integrated the configuration this section can handle functions and interfaces which are not applicable to your unit.

The different versions are marked with:

- B** • CC Pilot™ XS Basic
- E** • CC Pilot™ XS Extended
- A** • CC Pilot™ XS All-Integrated

Storage memory

For storage, a Compact Flash memory card is used, which is a type of non-rotating hard disc drive. With this method, the CC Pilot™ XS is nearly insensitive to vibrations which can be a problem when using rotating hard discs.

Besides the hard disc, there are also other types of memory in CC Pilot™ XS: RAM and Kernel Flash. RAM memory is used by applications and the OS when the computer is running. This memory is not persistent and will lose its information whenever the computer is shut down.

The Kernel Flash memory is where the operating system is loaded, which differs from ordinary computers where the operating system is stored on the hard disc.

CAN

It is possible to connect two CAN-channels to the CC Pilot™ XS to connect a control system or, for example, the FMS system in a vehicle. The contact for CAN-connections follows the CANopen standard. CAN-drivers are installed on the onboard computer and are included, in this case, with the delivery. CC Systems AB is well-experienced with control via the CAN-interface and both software and drivers are tested in various environments and under different conditions. Contact CC Systems AB if you need more information about our CAN-solutions.

Ethernet

With an Ethernet connection, the CC Pilot™ XS can access other units and networks. The CC Pilot™ XS has support for double Ethernet connections which allows it to, for instance, act as a gateway in an embedded system.



Be aware that connecting CC Pilot™ XS to a network environment can impose a security threat. CC Pilot™ XS is in its default setup not secured from external entities trying to access inbuilt network related functionality such as FTP or Telnet.

USB

Via the USB port, you can connect a multitude of devices to the CC Pilot™ XS. For some devices, however, drivers compatible with the operating system are required to be installed in order for the device to function. In the Microsoft Windows CE operating system, which comes standard with the CC Pilot™ XS, there is support for a standard keyboard and mouse via USB.

COM

A COM-port with RS-232 support is available on CC Pilot™ XS. The COM-port is used for, among other things, connecting serial devices and synchronising the CC Pilot™ XS with a PC-computer.

Depending on the configuration of the MISC connector the external COM port will have different level of signal supported. Please see the Connectors section for more information.

Besides the external COM-port there are two internal COM ports used when the CC Pilot™ XS are equipped with the internal GSM/GPRS-modem, GPS and BlueTooth.

Function	Basic	Extended	All-Integrated
External port	COM 1	COM 1	COM 1
GPS			COM 2
BlueTooth		COM 2	
GSM			COM 3

E A Digital Inputs

There are up to three Digital Inputs available on the CC Pilot™ XS Extended and All-Integrated. The voltage range for a logic “Lo” signal is 0–0.8 V and logic “Hi” is between 2-36 V. There is no direct sampling of these inputs instead the actual values are polled by the software.

E A Audio

Audio is available in the MISC connector on the CC Pilot™ XS Extended and All-Integrated. The audio offers possibilities to play everything from warning sounds to music directly from CC Pilot™ XS two channel speaker stereo output. Microphone in is also available for sound recording or to present the sound from, for example, cameras. Volume is set by the volume controls within Windows CE.

E A Video

On the CC Pilot™ XS Extended and All-Integrated there are connectors for two composite video inputs for the attachment of video sources such as rear view cameras. It supports PAL, the European video format, as well as NTSC, the American standard.

A GPS

The internal GPS receiver in the CC Pilot™ XS All-Integrated follows NMEA-0183 standards. This standard is the most common on the market and most software which uses GPS technology is compatible with the internal GPS receiver.

In order for the internal GPS unit to function, it requires a GPS antenna to be connected to the GPS antenna connector on the CC Pilot™ XS and that the antenna is mounted correctly.

A

GPRS/GSM

The CC Pilot™ XS All-Integrated has an integrated GPRS/GSM modem for data connection and access, for example, the internet or company network. The modem has support for dual band (900/1800 MHz) and GPRS class 8 which gives a maximum transfer speed of 85,6 Kbit/s.

The GSM/GPRS modem has a lower maximum operating temperature than the other components in the on board computer. When the temperature goes beyond the operating range for GSM/GPRS, the modem will automatically shut down.

E

Bluetooth

The CC Pilot™ XS Extended has built in support for SPP Bluetooth. SPP stands for serial port profile and can be used as a wireless serial port extender.

Using SPP Bluetooth communication data sent to the internally connected serial port are transparently forwarded to another Bluetooth module with serial port profile

CC Pilot™ XS

Connectors

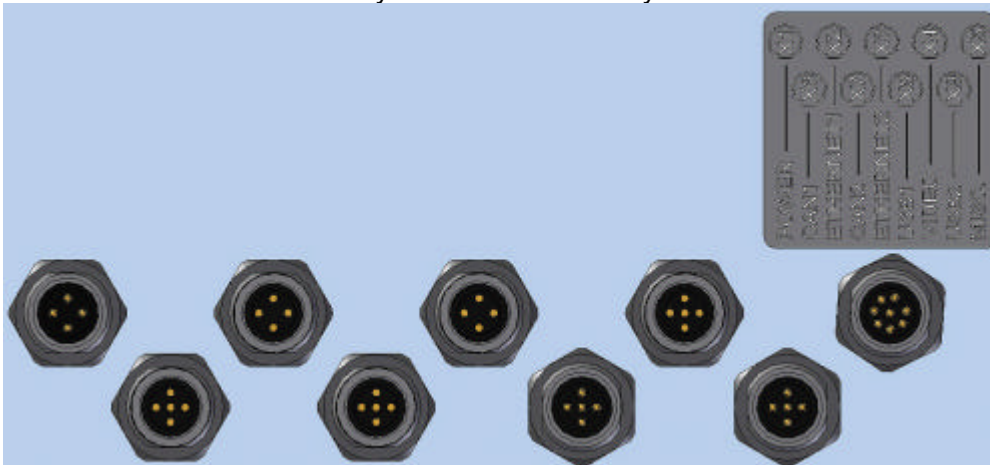
Connectors

Accessible on the rear and top of CC Pilot™ XS, there are a number of ports to connect various peripheral equipment. In order to give the CC Pilot™ XS its high environmental classification, the unit is equipped with DIN M12 connectors. CC Systems AB provides adapters which convert from DIN M12 to standard connectors.



Use caution when plugging/unplugging connectors. If the pins become bent or damaged they may not function correctly, or in the worst case, the onboard computer or other equipment may be damaged.

The connector legend describes where the connectors are located on your unit. On the top of the unit there are also connectors for the GPS antenna and GSM/GPRS modem. The connectors available is dependent on the unit's configuration, it can therefore address connections which may not be available to your unit



The table below describes the connectors on the CC Pilot™ XS.

Position	Description
X1	Power Supply
X2	Ethernet1
X3	Ethernet2
X4	Video
X5	MISC (COM, Audio and/or Digital In
X6	CAN1
X7	CAN2
X8	USB1
X9	USB2

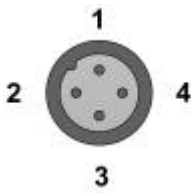


Notice that the following connector descriptions are those which are located on the unit, not those that the attached cables shall have in order to mate with them.

Power Supply Connector

Marking: X1 POWER

Connector Type: DIN M12 4-pole, A-coded, male



Pin	Description
1	Battery(+28 VDC)
2	ON/OFF (+28 VDC)
3	GND
4	GND

The CC Pilot™ XS power supply can range from 10 – 36 volts. If the power supply voltage goes beyond this range, the unit shuts down. In order to ensure stable operation with tolerance against temporary supply disruptions, the supply voltage should be at least 12 V.



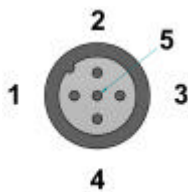
For complete hook up instructions, see the section entitled Installation.



Video (Video1, Video2)

Marking: X4 VIDEO

Connector Type: DIN M12, 5-pole, A-coded, female.



Pin	Signal
1	GND ch 1
2	Video ch 1
3	Video ch 2
4	12V
5	GND ch 2

The connector is used to take in video signals of the type composite video. They are PAL- and NTSC-compatible.

The video connector can be used to power external using the the12V unfiltered supply. The output has a current limit that depends on the internal unit temperature. The current is limited to 0.150A at an internal unit temperature of 70 degrees Celsius and around 0.2A in normal working conditions.

The cable which is used to connect the camera to the computer shall be a 75-O coaxial cable, e.g. M17/94-RG179.

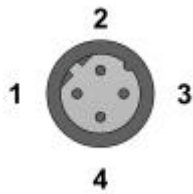


Ensure that there is no DC-offset (supply current) on the video signal connected since this can cause damage to your CC Pilot™ XS.

Ethernet (Ethernet 1, Ethernet 2)

Marking: X1 Ethernet1 and X3 Ethernet2

Connector Type: DIN M12 4-pole, D-coded, female



Pin	Signal
1	TX+
2	RX+
3	TX-
4	RX-

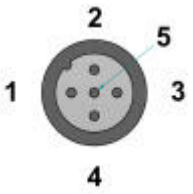
The ports support 10/100 Mbps, i.e. communication speed up to 100 Mbps.

CAN (CAN1, CAN2)

Marking: X6 CAN1 and X7 CAN2

Connector Type: DIN M12, 5-pole A-coded, female

The CAN connector follows the CANopen standard



CAN 1 & CAN 2		
Pin	Signal	Description
1	-	No connection
2	CAN V+	8-36 V Out
3	GND	
4	CAN1 H	CAN High bus line
5	CAN1 L	CAN Low bus line

The interface has a PCA82C251 high speed transceiver installed and follows the ISO 11898-24V standard. There is no termination in the interface; therefore, this shall be present in the cable.

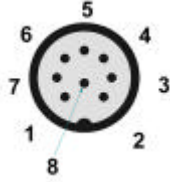
The CAN connectors can be used to supply power to external units using pin 2 and 3. The output has a current limit that depends on the internal unit temperature. The current is limited to 0.31A at an internal unit temperature of 70 degrees Celsius.

Protection against external voltage (up to 40V) higher than the supply voltage is provided from a diode in series with the output. The supply voltage will be the same as the filtered supply to the CC Pilot™ XS with an additional voltage drop over the diode in series, i.e. the output voltage will be about 23 volts when 24 volts is supplied.

Misc Port (COM1) Alternatively: Audio, Communication and or Digital Input (MISC)

Marking: X5 MISC

Connector Type: DIN M12, 8-pole, A-coded, male.



NOTE! This connector has two alternative functions depending on the configuration ordered. The connector can be either as an communication (COM) port or as a combination port with Audio, Digital Input and communication (COM) port. The configuration is factory set and can not be changed.



COM port

When configured as a serial com port the signal “Ring Indicator” has been omitted, which means that peripherals which require this signal will not work. The rest of the COM port follows the RS232 standard, so peripherals which follow this standard can be connected. The supported communication speed for these ports is 2.4 to 115.2 kbps.

COM		
Pin	Signal	Description
1	DCD	Data Carrier Detect
2	RxD	Receive data
3	TxD	Transmit data
4	DTR	Data Terminal Ready
5	GND	Signal reference
6	DSR	Data Set Ready
7	RTS	Request To Send
8	CTS	Clear To Send



COM, Audio and Digital in

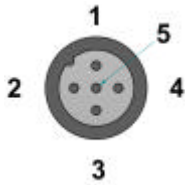
When X5 is configured as a combination of COM, audio and digital in the port will have a limited COM port with only send and receive data signals. The port will also include two channel audio out, microphone in and two channel digital in.

Audio & Digital Input		
Pin	Signal	Description
1	Audio Out L	Left channel audio out
2	Audio Out R	Right channel audio out
3	TxD	Transmit data
4	Microphone	Microphone audio in
5	GND	
6	Digital Input	(0-36 VDC) ¹⁾
7	Digital Input	(0-36 VDC) ¹⁾
8	RxD	Receive data

USB

Marking: X8 USB1 and X9 USB2

Connector Type: DIN M12, 5-pole, A-coded, male



Pin	Signal	Description
1	Vbus	Power supply to external USB unit. 5 V, 500mA max, Internal short-circuit and overload
2	D-	Data
3	D+	Data
4	-	No connection
5	GND	

The two USB ports follow the USB 2.0 standard with a transfer speed of up to 480 Mb/s. The USB ports are also compatible with the USB 1.1 standard. Both USB ports operate in host mode.

The power supply follows the USB standard, which means an output voltage of +5 V and maximum current of 0.5 A per port. Note that if too much current is drawn, the built-in safety will shut off the USB port(s).

A

GSM/GPRS-antenna

Marking: GSM

Connector Type: SMA, female



This connector is used to attach the antenna to GSM/GPRS modem. The cable which is used to connect the GSM/GPRS antenna to the computer shall be a 50-Ω coaxial cable which has low attenuation at high frequency (~ 1.5 GHz).

A

GPS-antenna

Marking: GPS

Connector Type: SMA, female



This connector is used to attach the antenna to the GPS receiver. The cable which is used to connect the GPS antenna to the computer shall be a 50-Ω coaxial cable which has low attenuation at high frequency (~ 1.5 GHz).

The voltage supported for active antennas is 3.3 V DC.

E

Bluetooth-antenna

Marking: Bluetooth

Connector Type: SMA, female



This connector is used to attach the antenna for the Bluetooth.

CC Pilot™ XS

Installation

Your CC Pilot™ XS must be installed in such a way that the unit is not exposed to any unnecessary stress or present any traffic danger. In this section, some recommendations are made regarding methods for how the unit should be installed.



CC Pilot™ XS shall only be installed and serviced by authorized personnel. If the unit is opened by non-authorized personnel, the warranty becomes void.

Placing and installing of the unit and peripherals

The CC Pilot™ XS shall be installed in a ventilated space where air is able to circulate around the unit, therefore not near hot air vents or the like. If the unit becomes too warm, it may not perform to its full capacity and, with high temperature, cease to function.



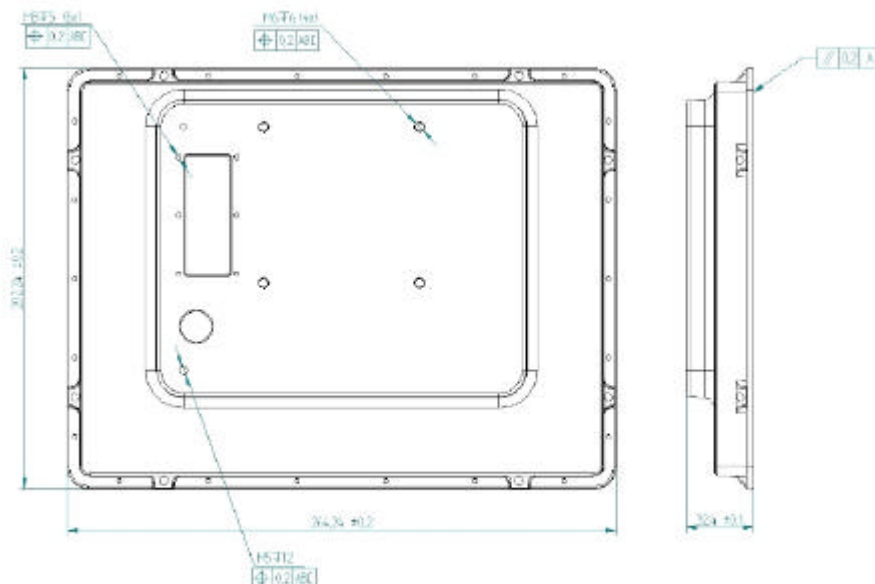
If the preceding instructions are not observed, the cooling of the unit can be degraded which can lead to overheating, consequently causing permanent damage to the unit.

When the CC Pilot™ XS or any device is installed it is important to do so in such a way that the installation is traffic-safe. One should also avoid installing the unit where it will block the driver's view. This applies to both the instrument panel and the view through windshield. One should also think about how the placement affects personal safety in the event of a collision.

We recommend installing CC Pilot™ XS in such a way that it is not exposed to unnecessarily vibration or other stress.

Bracket Mounting

The CC Pilot™ XS is preferably mounted on a convenient bracket which allows for adjustment of the display's position and angle. The bracket should have, or be provided with, a flat fastening plate to which the unit is bolted (VESA 75). To fasten, use the appropriate M6 cap screw of type MC6S (Allen) or MRT (Torx). Note that the enclosure has blind holes, which give a maximum thread depth in the enclosure of 6.5 mm. The maximum torque is 2.5 N·m. Apply a thread locker in all bolt holes, e.g. Loctite 222.



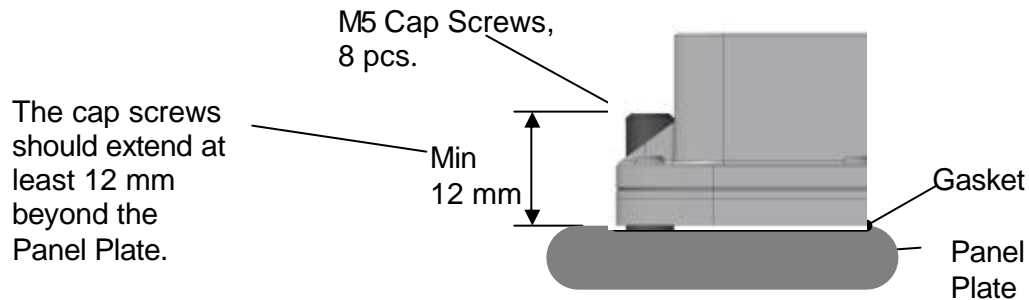
Panel Mount

There are two installation alternatives for panel mounting: front-mounted or rear-mounted.

With a front-mounted installation, use the rubber mask as a seal against the panel plate. The unit is locked down by applying clamps which are either fixed to the panel (recommended) or fixed to the unit through holes for VESA75 installation.

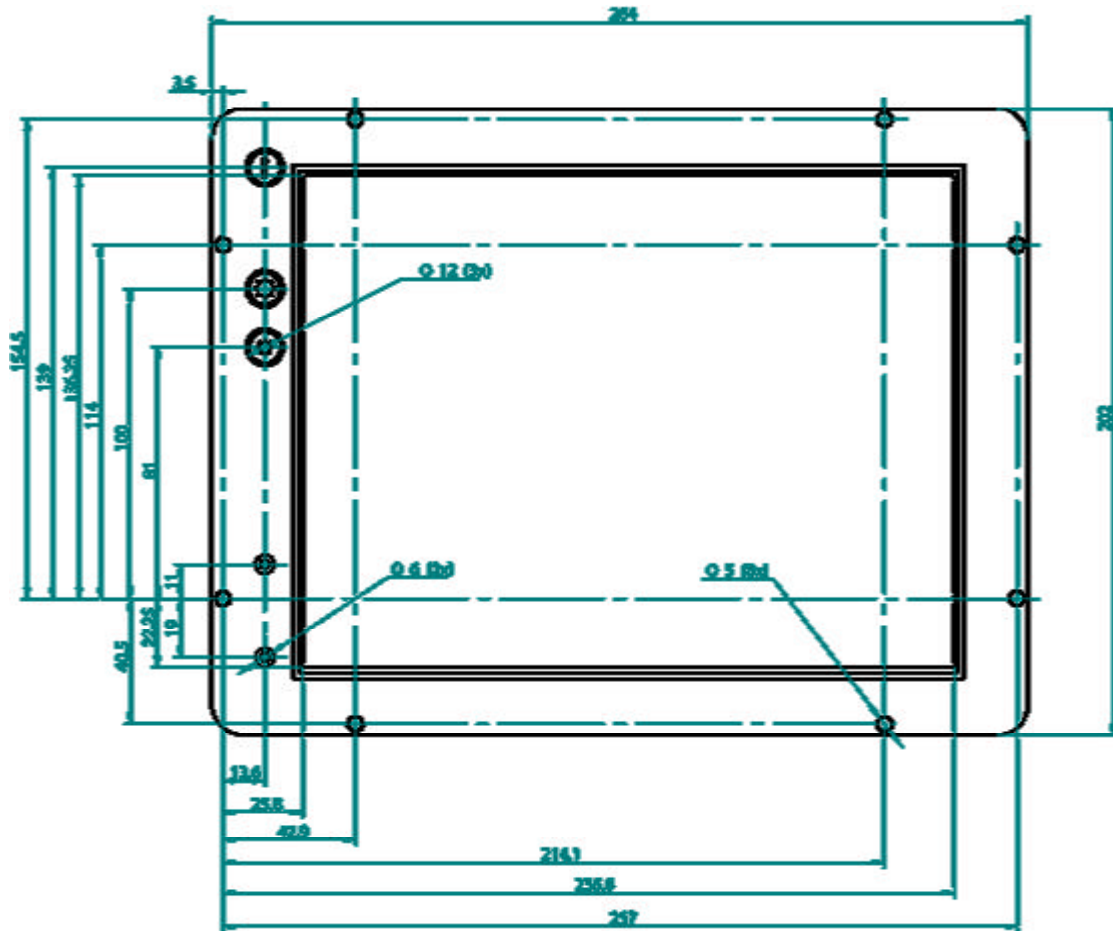
By replacing the rubber jacket on the unit with a cut-out rubber gasket, the CC Pilot™ XS can also be rear-mounted inside a suitable panel or equivalent. For this, the eight fastening holes are used, see the figure below. As a fastener, appropriate machine screws of type MRT M5 or MC6S M5 can be used. The maximum torque is 2.5 N-m.

If the surface against which the unit will be fastened is not flat, one must be careful so that one does not expose the unit to mechanical stress due to tightening. This is suitably solved through applying appropriate spacers between the unit and the surface being attached to. As an alternative, a separate flat fastening plate can be used for the unit. This is then attached with separate screws, or some type of fasteners, to the panel. Use a thread locker in all screw holes, e.g. Loctite 222

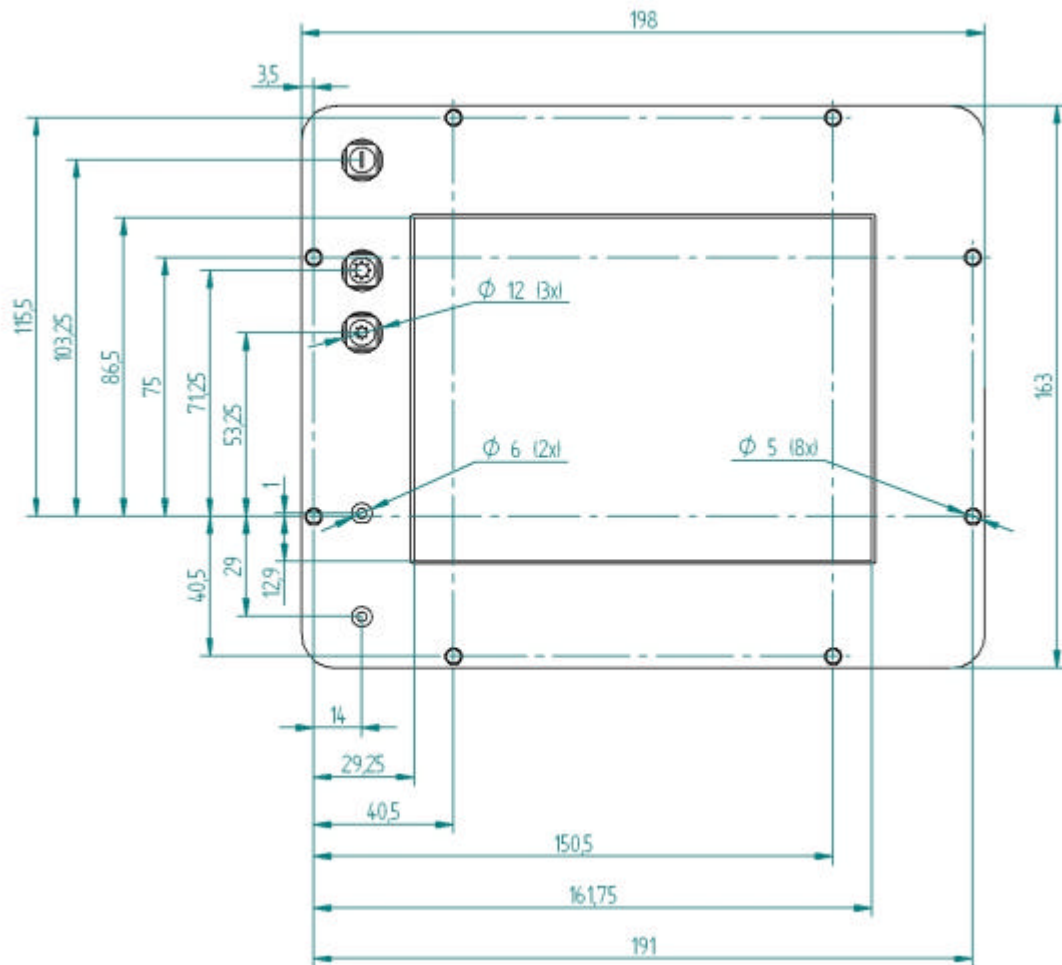


The drawing above illustrates the spacing of the eight mounting holes for panel mounting from the rear. The drawings below show unit dimension, mounting holes placement and cut out for display, buttons and indicators. For other dimensions please see the section weight and dimensions.

Display Panel Dimensions for 10,4"



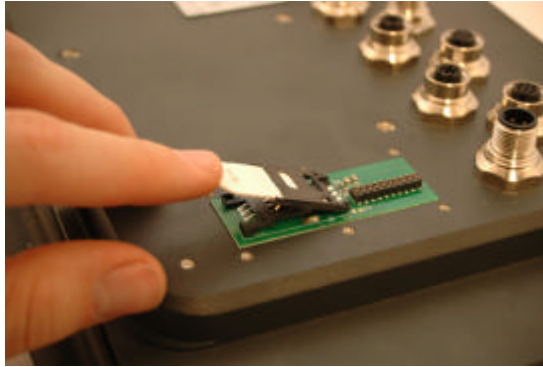
Display Panel Dimensions for 6,5"



A

Installing the SIM card

The SIM card is installed in a SIM card holder under the SIM card cover. Install the SIM-card by unscrewing the six screws holding the SIM card cover and lift the cover away. Open the flap on the SIM card holder and place the SIM card into the holder, being careful to slide the card all the way into the holder. Close the flap. Reinstall the SIM card cover.



E A

Installing the Antenna

Antennas for GPS, GSM/GPRS and Bluetooth can be mounted on the vehicle's roof or inside the vehicle's cabin (e.g. in the windshield). Mounting inside the cabin, however, degrades the reception. The reception is degraded further in vehicles which have electrically-heated windshields. Attach the antenna cables to their respective contact on the unit's top side. See chapter Connectors for the right choice of antenna cables and connectors.

For best performance the GPS antenna requires a free viewing angle towards the sky which covers 130° and that it is mounted at least 400 mm from any other radio antennas, e.g. FM-antenna.

Cables

Cables shall be installed so that they don't run the risk of being damaged, pinched or worn. Avoid bending and twisting cables. Strain-relief on cable assemblies shall be arranged near the connection to the respective unit. This is in order to avoid stress to the unit's contacts. The connectors shall always be screwed-in securely to give good contact and avoid unnecessary strain.

Through adapter cables, as supplied by CC Systems AB, standard connectors for Ethernet, USB and COM can be connected to the unit. The hook up of these adapter cables can and should be placed in a moisture-free, hidden space and should be secured and strain-relieved.

Keyboard and Pointing Device

The Keyboard and Pointing Devices connected to CC Pilot™ XS must support connection via USB. CC Systems AB offers devices intended for the CC Pilot™ XS. The keyboard and Pointing Device should be placed in a location that is easily-accessed, but not in the way when they are not being used.

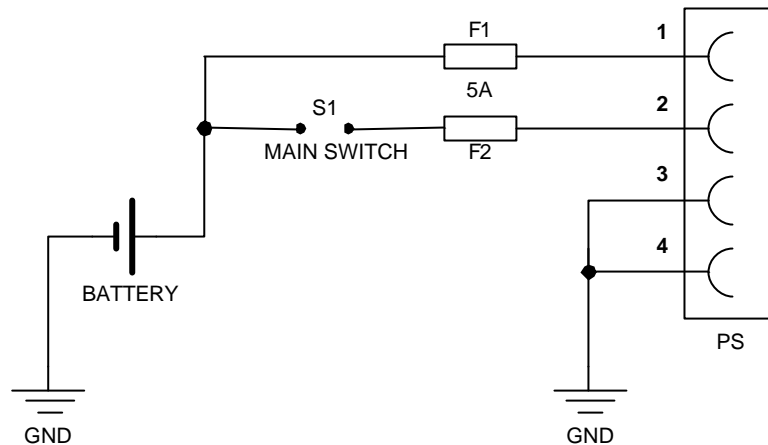


Consider traffic safety whenever the CC Pilot™ XS is installed and used in vehicle installations. CC Systems AB does not recommend that the CC Pilot™ XS or its accessories are used actively by the driver when a risk of injury to people, or damage to property, is present.

Connecting the Power Supply

This instruction addressed vehicle installations but the principle is the same also for other types of installations. See also the description of the pinouts for the Power Supply Connector under the section Connectors.

Carefully observe the connection diagram below. Ensure that their plugs are turned the right way around and that they are not forced in but lock together smoothly and easily. GND is connected to the vehicle's ground.



Battery (pin 1), i.e. the computer's power supply (+28 VDC) is coupled directly to the vehicle's battery (BATTERY) through a 5-A fuse (F1). If applicable connect the on board computer before any main switch, as per the illustration above.

ON/OFF (pin 2), i.e. the computer's on/off signal is connected through a 5-A fuse (F2) to the battery. If the vehicle has a main power switch (S1, MAIN SWITCH) the computer shall be connected after it, as in the illustration above.

By connecting the power supply according to the illustration above, the vehicle computer will automatically start when the main switch is turned on, and shut down when the switch is turned off. While the main switch is in the ON position, the onboard computer can be turned off and on with the On/Off-button.

The Power Supply Cable's leads, which are supplied by CC Systems AB, are colour-coded according to the table below.

Pin	Signal	Colour Coding
1	Battery (+28 VDC)	Brown
2	ON/OFF (+28 VDC)	White
3	GND	Blue
4	GND	Black

CC Pilot™ XS

Software

This section gives a short description to some of the software supplied with the CC Pilot™ XS.

Operating System

The CC Pilot™ XS is supplied with the Windows CE operating system and this manual provides the basics how to get started with basic operations and configurations.

Windows CE resembles and behaves a lot like Microsoft's Windows operating system for the personal computer. But there are fundamental differences. Windows CE is built up in another way and is intended for other types of units than the PC platform. This means, among other things that programs intended for a PC running windows won't work on Windows CE.

There are several versions of Windows CE and for several different processor families. In order for third party products to function on the CC Pilot™ XS, the application must be built for XScale, or alternatively, ARM processors as well as be built for the version of operating system which the unit is equipped with.

The CC Pilot™ XS offers a multitude of connection alternatives, for instance via, USB. In order for the device connected to CC Pilot™ XS to function correctly, sometimes drivers must be installed. CC Systems AB can only guarantee the function for applications and devices which are tested and approved by CC Systems AB.

Getting Started with Windows CE

The following section will provide essential information to get you started using CC Pilot™ and performing basic configuration of the Windows CE on CC Pilot™

The Desktop



E A

Nr	Name	Description
1	My Computer	To access the computer's hard disc (Compact flash)
2	Internet Explorer	To access the internet browser
3	Start button	To start programs and access the Control Panel
4	Network status	Information about the network connection and access to network settings
5	Volume control	Access to the volume control
6	Input language selection	Information about what input language is used
7	Status for Power Supply	Information about the power supply and setup for energy saving features
8	Clock	Shows the time, and allows time and date to be set.
9	Minimises all windows	Minimises all windows which are visible on the desktop
10	Input panel	Access the virtual desktop and its setup

Navigating the Desktop

Using the touch screen with a stylus or finger, one can navigate in Windows CE and the applications being in use. Besides the touch screen, keyboard and mouse connected via the USB port can also be used.

To input letters and symbols while using the touch screen, there is a virtual keyboard called *Input Panel*. The Input Panel can be used either via the mouse or the touch screen. The Input Panel is started by pressing on its icon which is to the right of the clock in the task bar. In the menu which is shown, choose *keyboard* to show the virtual keyboard. Two sizes of keyboard can be chosen. The default setting is the small keyboard. To view the larger keyboard, click on the icon for the Input Panel and chose *LargeKB*.

To input specific local letters using the input panel, such as the Swedish å, ä, ö. Click in the áü button where alternative letters are available.

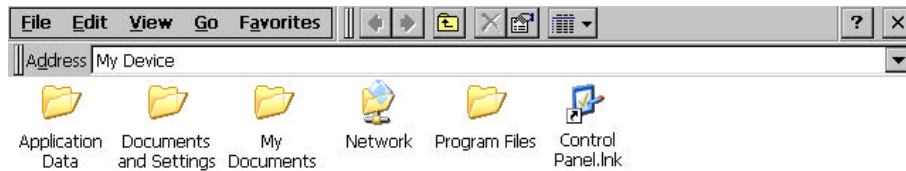


Storing data

There are various possibilities to store data while working with the CC Pilot™ XS. In contrast to the Pocket PC handheld computers, the CC Pilot™ XS works more like a personal computer. When the computer is shut down, all applications shut down and data that has not been saved is lost. Therefore it is important to know which memory holds the stored information after power to the unit is switched off, the so-called static memory. The table below describes storing possibilities in the CC Pilot™ XS. Besides these one other types of memory can also be connected, such as USB memory sticks.

Type of	Name	Description
Compact flash	My Device	Hard disc in the form of Compact Flash memory. For permanent data storage, applications and
System memory	RAM	Used by the application that is running. This memory is not static and is erased when the unit is shut down.
The Network	Network	Information can also be stored on other units via the network.

Use the Explorer to access files on the unit. There are several ways to start the explorer, for instance by clicking on the icon *My Device* on the desktop. A window is then shown similar to the picture below. Here, one can access the folders stored on the Compact Flash memory. If other memory modules are attached, like for instance a USB memory unit, this will also appear here.

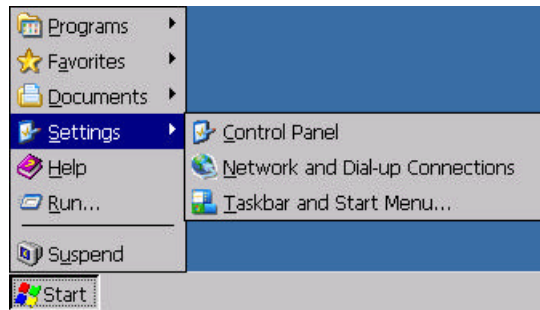


NOTE! To prevent the loss of information, which is stored on the hard disc, the unit must be shut down correctly. If the unit shuts down incorrectly or the power is switched off to the unit this can lead to corrupt files and damage to the hard disc.

The Control Panel

Settings in Windows CE can be changed through the Control Panel. Using the Control Panel it is, for instance, possible to change the settings for the screen, network connections as well as time and date.

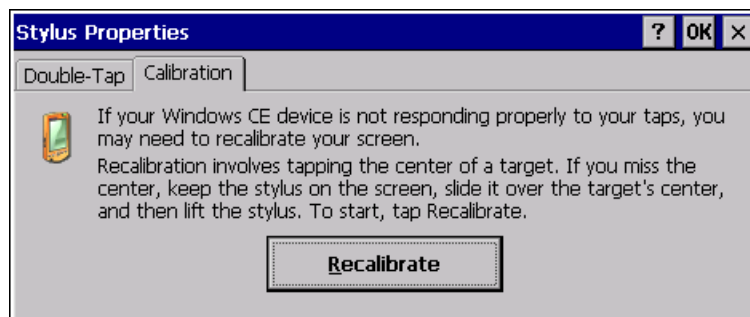
The Control Panel is activated from the start menu by clicking on the *Start* Button, then choosing *settings*, and then *Control Panel*.



Calibrate the Touch screen

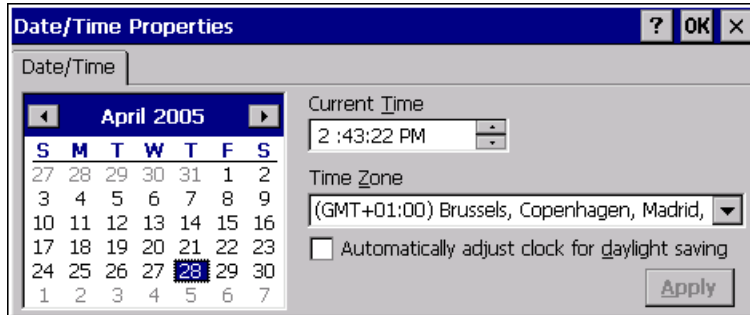
If the touch screen needs to be calibrated, the calibration routine starts automatically when the touch screen is tapped. Follow the instructions as shown on the screen to calibrate the touch screen. If the calibration does not succeed, the calibration routine will start over. The calibration can be cancelled by pressing the *Escape* (Esc) button on an attached keyboard.

The calibration routine can be started manually by selecting the alternative *stylus* on the control panel. Chose the *Calibration* tab in the dialogue box as shown and press the button *Recalibrate*.



Set Time and Date

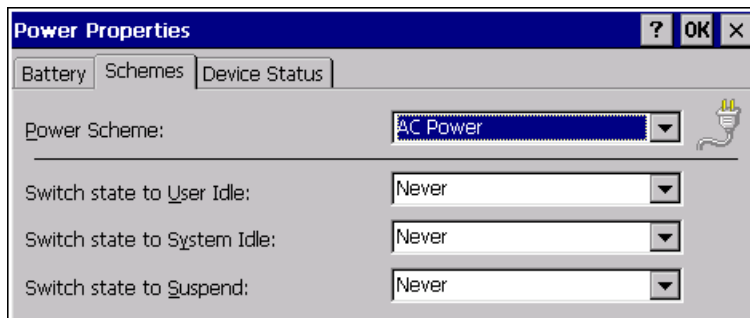
Open the settings for time and date through *Date/Time* in the Control Panel. Input the date, time and time zone. Activate these settings by pressing the button *Apply*.



Configure Power Properties

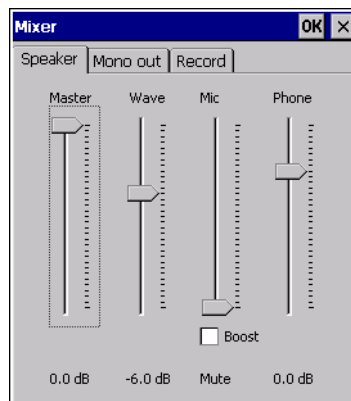
Choose *Power Properties* on the Control Panel to choose which energy profile to be used by your CC Pilot™ XS in different situations. For example, the brightness of the screen can be reduced when the unit is not being used.

In the example below, Windows is configured to always have the screen on and never go down into an idle state.



E A Adjusting sound level

If your CC Pilot™ XS is equipped with audio capabilities you will have a volume control icon in the start menu bar. Clicking on this icon displays the volume controls. Use the levers to adjust the volumes.



Changing the input language

The toolbar shows the input language that is currently used. To temporarily change the input language click on the icon and select the desired input language.



To permanently change the input language, select Regional setting from the Control Panel. In the Input tab select the desired default language.



Windows Help

The built-in help in Windows CE gives information about most functions and settings within Windows CE and respective applications. Help is started through the *Start* menu by choosing *Help*.

In many windows there is also a button with a question mark (?) in the upper right corner. Click on it to directly come to the right section in Help.

Network Access

The CC Pilot™ XS can have up to two Ethernet connections for network access. To be able to connect with a network it may be necessary to configure the network settings. The default configuration is to obtain settings using DHCP. To manually configure the network settings, open Network Settings in the Control Panel. Contact your network administrator for help with network settings.



There are also other ways to connect to a network, such as through dial-up connection via the GSM/GPRS modem.



Be aware that connecting CC Pilot™ XS to a network environment can impose a security threat. CC Pilot™ XS is in its default setup not secured from external entities trying to access inbuilt network related functionality such as FTP or Telnet.



XS Settings

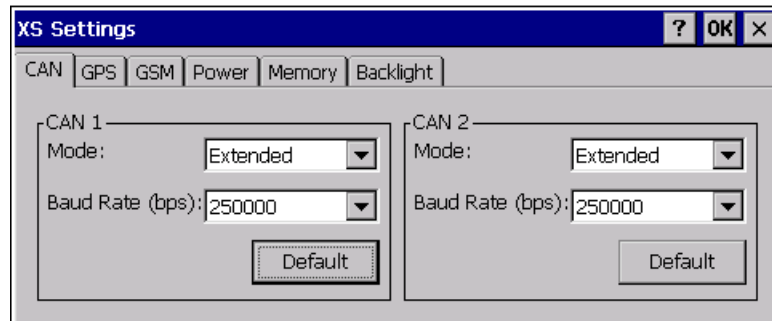
XS Settings

CC Pilot™ XS specific settings is configured using XS Settings. Using XS Settings configuration options is accessible for CAN, GPS, GPRS, automatic backlight control and power outlets. XS settings are accessed by opening XS Settings from the control panel.

Some of the settings will not take effect until the system is restarted. XS settings will inform if this is necessary upon pressing OK.

CAN

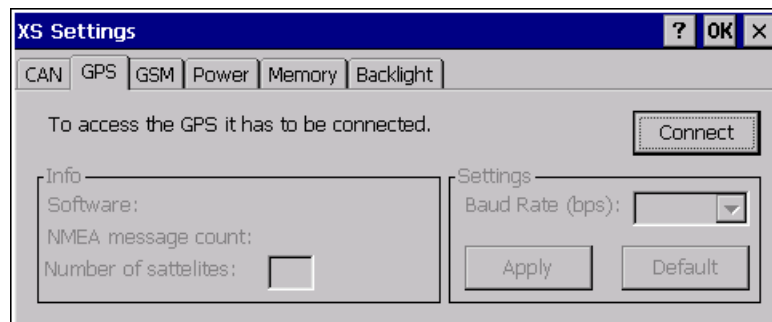
From the CAN tab, settings are made for CAN message frame mode and baud rate. By pressing the default button the CAN settings will be reset to predefined default settings.



GPS

From the GPS tab, status can be read for the GPS and the baud rate of the GPS can be altered.

To be able to get any information from the GPS it must be connected. Make sure all other programs that use the GPS are closed then click Connect to establish a connection. The connection procedure can take up to several minutes.



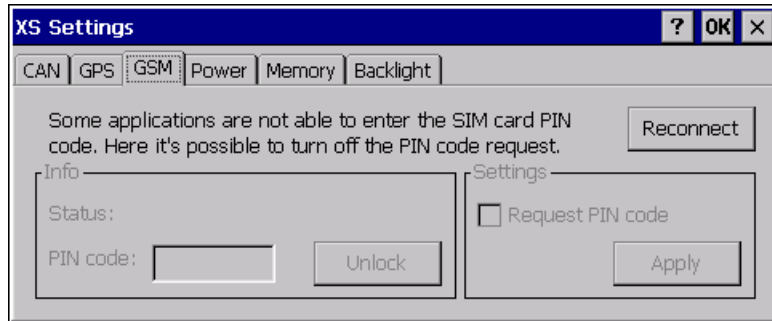
When connected the Info panel will give following information:

- » **Software information** of current software version in the GPS receiver.
- » **NMEA message count** this counter increases with one each times the GPS sends out a message with information.
- » **Number of satellites** is the number of satellites the GPS receives signals from. This value is only valid if the NMEA message counter is counting.
- » Change baud rate by selecting the desired baud rate and click apply. Note that the baud rate change will reset to default rate when the unit is restarted.

A

GSM

From the GSM tab status information are displayed for the GSM modem. From here it is also possible to turn on or off the PIN code of the SIM-card.

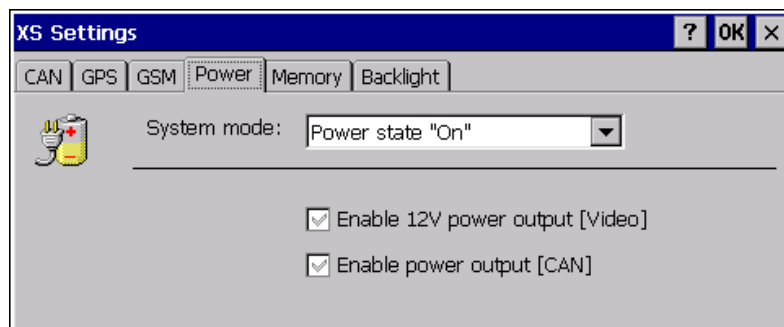


To turn on or off the PIN-code please:

1. Make sure that all other programs that use the GSM modem are closed.
2. Select the GSM tab.
3. In the Info>Status information of the code status is presented.
 - » ENTER PIN, the SIM card needs a PIN code.
 - » PIN OK, the SIM card is unlocked.
 - » --, An error has occurred.
4. If PIN code is needed for unlocking the card, enter the code in the PIN code field and click Unlock.
5. To change the security level check or uncheck the Settings>Request PIN code and click Apply. To be able to change the security level you always need to have the valid PIN code entered in the PIN code field before clicking Apply.

Power

From the Power tab it is possible to control the power outlets on the unit. For more information regarding supply levels of the power outlets see the Connectors chapter. The power outlets can also be controlled by other applications or from the I/O-driver. Therefore you must be careful when setting the power properties, not to interference with any application or system requiring power out.



The power settings are set individually for each of Windows CE's power states. In the Power state dropdown list the power states are present. Select the state you want to make the changes for. Check or uncheck the Video power enable and CAN power enable checkboxes to select if the power supply should be on or not

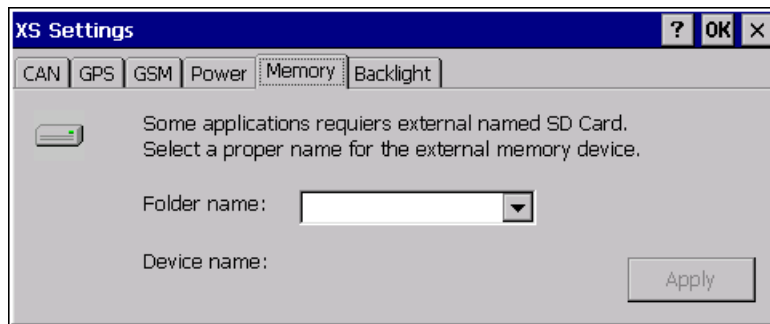
- » **On:** black tick in the checkbox. The power output will switch on when the system enters the particular system mode.
- » **Off:** empty checkbox. The power output will switch off when the system enters the particular system mode.
- » **Invalid:** grey tick in the checkbox. No change will be made when going into the particular system mode. Use this option when other applications are controlling the power output.



Be aware that putting a high load on the power outlets will result in a higher unit temperature.

Memory

From the memory tab it is possible to select the name to be used for attached USB memory units. Select the name to use from the folder name drop down list box.

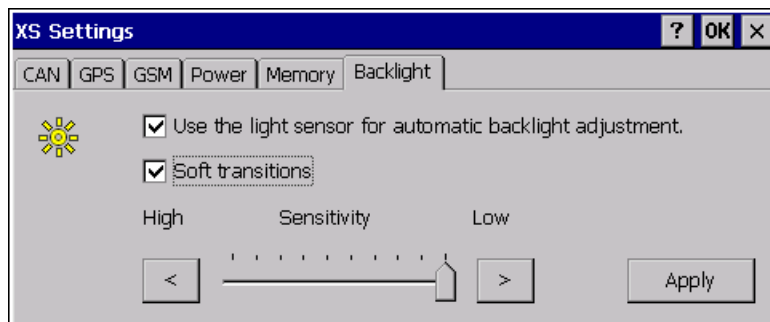


Backlight

From the backlight tab it is possible to enable and adjust settings for the automatic backlight control.

To enable or disable the automatic backlight control check or uncheck the checkbox Use the light sensor for automatic backlight adjustment.

By selecting the soft transitions checkbox the backlight will slowly change intensity for new light conditions.



Adjust the sensitivity of the backlight control by moving the sensitivity slider. By moving the slider against low, a bigger change in surrounding light will be needed for any change in backlight level and vice versa.

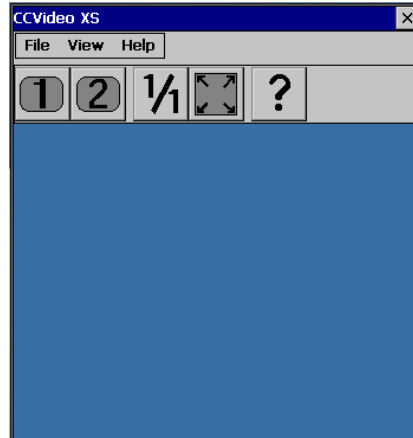
When enabling automatic backlight control, the brightness buttons at the front of CC Pilot™ XS will change the offset of the backlight level. This offset is depending on the

surrounding light; therefore the setting may vary depending on whether it is changed in bright or dark environments.

CC Video

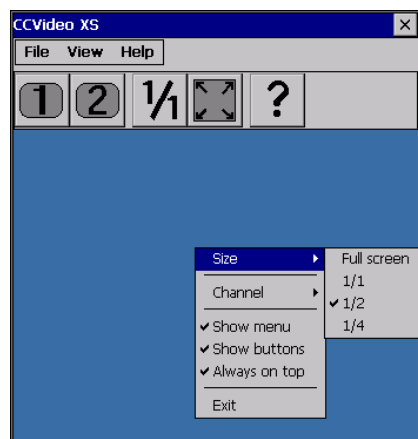
CC Video is the application used to view the video input signals from the video, X4, connector on the CC Pilot™ XS. CC Video does only display this signal; please use the Microsoft Media player to display media files and other video streams.

To enable usage of the video application in many environments, the CC Video can be controlled in several ways, by the tool bar buttons, the menus, the pop up menu or by an external application using an application interface.



The pop up menu

When the menu and toolbar is hidden the pop up menu is used to interact with CC Video. When using touch screen the menu is accessed by pressing and holding the screen within the video window. If a mouse is attached to the computer the menu can also be accessed by right clicking the mouse within the video window.



Selecting video channel

To select which camera channel to display, press the desired channel button or select the desired channel from the view menu.

Changing video display size

The size of the video window is changed by selecting from the predefined sizes using the pop up menu or the view menu. The size can also be changed to any size by dragging the window border.

Hiding toolbars and buttons

To hide the toolbar and menus and provide maximum space for the video feed, uncheck the show menu and show buttons alternatives from the view menu. Use the pop-up menu and check respective alternative to get the menu and toolbar back.

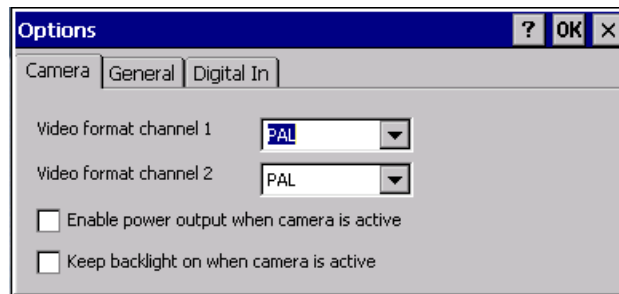
Changing camera settings

CC Pilot™ XS supports PAL and NTSC cameras. Select the format according to your camera by accessing the options dialog from the view menu of CC Video. The format can be set for each camera channel.

The cameras can be powered directly from CC Pilot™ XS by enabling the 12 V output power within the camera connector.



Using the camera power output may increase the unit temperature. Also note that the signal from the 12V power out is not filtered.

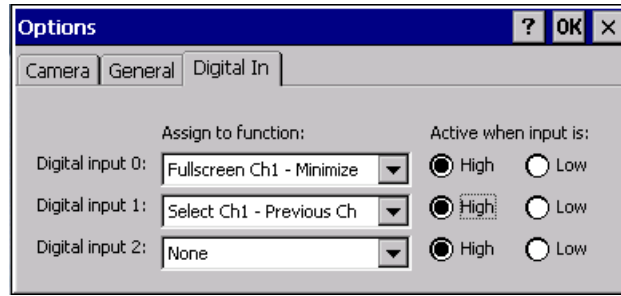


Using digital in to control video display

The video application can be controlled using the digital input signals optionally available in the X9 connector of CC Pilot™ XS. The behaviour of CC Video when these signals are changed is controlled from the Digital In settings, accessed from CC Video by selecting options from the View menu and in the options dialog selecting Digital In.

Select the desired behaviour from the list of functions then select if this should be activated when the signal goes high or low.

For example, one digital input can be connected to go high when a vehicle starts to reverse. By using the function Full screen Ch1 – Minimize the video display will show up in full screen when the vehicle starts to reverse and when finished the video window will go back to minimized mode.



CC Video can also be controlled from external application using a function interface. For more information about interaction with CC Video please contact your dealer.

Microsoft ActiveSync

Microsoft ActiveSync is a desktop computer tool for Windows used to synchronise information between the desktop computer and CC Pilot™ XS. Some third party application also requires to be installed using ActiveSync.

Connection

There are two alternative ways to connect a computer. Either through the COM port or through a network connection via Ethernet. Connecting via Ethernet gives the fastest communication but requires that the unit first establishes a partnership, which must be done through a COM connection. To connect the CC Pilot™ XS via the COM port use a null modem cable.

Note that from version 4.0 of ActiveSync the possibility to synchronise using Ethernet has been limited. To be able to use Ethernet as communication media Active Sync 3.8 should be used.

Establishing a Relationship

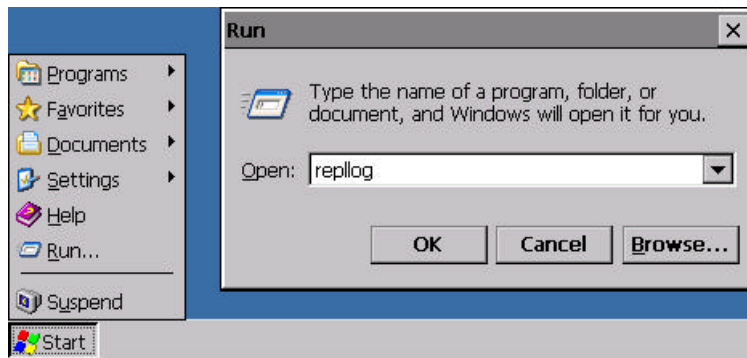
The PC connected to your CC Pilot™ XS must run Microsoft Windows and have Microsoft ActiveSync installed. If ActiveSync is not installed on the PC, ActiveSync can be installed from the accompanying CD or downloaded from Microsoft's homepage.

To be able to synchronise the CC pilot™ XS with the PC, a partnership must be established between them. A guide takes you through the necessary steps on the PC. The guide starts automatically when you install Microsoft ActiveSync, it can also be started manually by starting Microsoft ActiveSync and, in the File menu, chose Get connected.

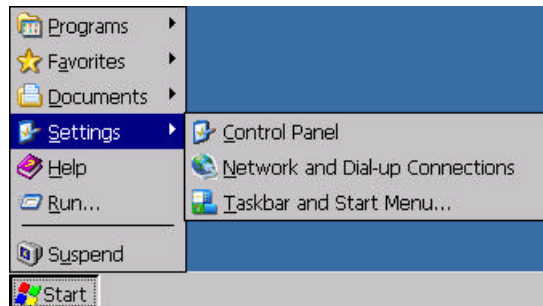


When the dialogue *Get Connected* is shown, the following steps must be carried out so that a connection can be established with the CC Pilot™ XS:

- » Ensure that the CC Pilot™ XS is connected via a null modem cable to a PC.
- » Start the CC Pilot™ XS (if it is not already started)
- » Start the program *repllog* on the CC Pilot™ XS. This is done via the *Start* menu. Click on *Run* and type *repllog* in the window shown and then press *OK*.



- » Now press *Next* in the *Get Connected* window on the PC. It is important that not too long of time has passed after you pressed *OK* on the CC Pilot™ XS in the previous step until you press *Next* in this stage. If possible, it is recommended that that these buttons are pressed simultaneously.



- » If the CC Pilot™ XS connects with the PC, there will appear a question on the PC about establishing a partnership. Follow the directions on the screen to establish a partnership.

To use the faster network connection, type *repllog /remote* in the *Run* window and chose Ethernet in ActiveSync on the PC.

Transfer of Files between the PC and CC Pilot™ XS

When a connection is established between the PC and the CC Pilot™ XS, files can easily be transfer between them. Start the Explorer file browser on the PC and select Mobile Device to access the file system on the CC Pilot™ XS.

Program installation

Different Windows CE programs have different requirements on how they shall be installed. The most common is either that they are installed directly on the CC Pilot™ XS or via Microsoft ActiveSync. Consult the instructions for the program you are installing to learn exactly how the program is installed.

A

Connect to the GPS receiver

The connection to the internal GPS receiver operates in the same way as with an external GPS, which connects on the external COM port. The internal GPS receiver is connected to an internal COM port, COM 2. The default setting for the baud rate is 4800 baud and position information is sent according to the NMEA standard.

In order to get a signal from the GPS receiver, an antenna must also be connected. For more information regarding antenna connection please see the Installation chapter. Occasionally, depending on the time of day and visibility against the sky, there can be problems with the signal reception from GPS satellites and the receiver then needs time to position it self. One may therefore need to wait several minutes before position information can be obtained.

The GPS receiver in itself gives only position information. So, a GIS software is still needed which interprets the signal, such as a map program.

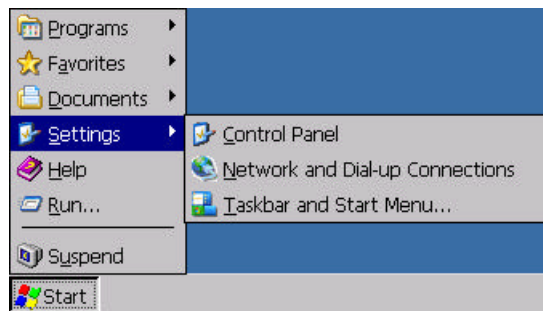
A

Creating a dial-up connection with the GSM/GPRS modem

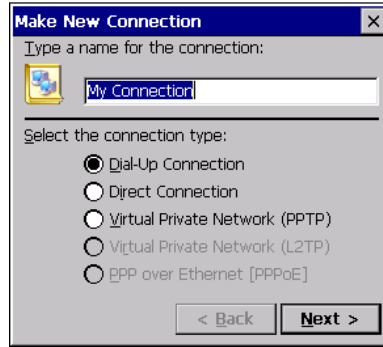
To create a remote connection via the internal GSM/GPRS modem, an antenna must be mounted to the GSM/GPRS connection on the CC Pilot™ XS. Besides that, a SIM-Card must be installed. See the Installation chapter for information on the SIM card and antenna.

Setting up the connection

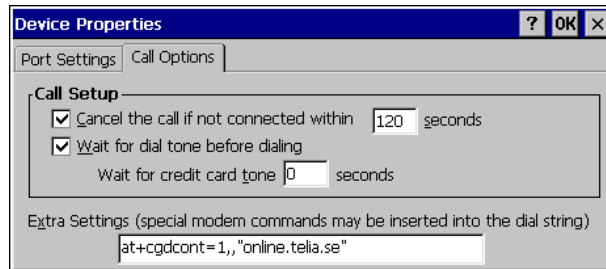
The Windows CE settings for creating a dial-up connection are found under network connections. Network Connections is opened by pressing the *Start* button, choosing *Settings* and then *Network and Dial-up Connections*.



- » Open *Make New Connection* and give a name for the connection in the dialogue which opens. Press *Next*.



- » Chose the internal GSM/GPRS modem on COM3.
- » Depending on the connection, an extra AT-command may be needed.. This is done under Configure. Chose the tab Call Options in the dialogue which opens and type in the AT-command under Extra Settings.

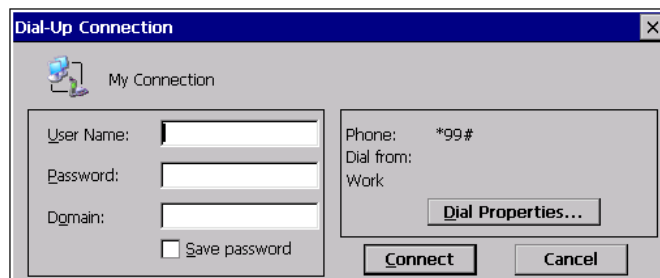


The contents of the AT-command vary depending on modem type and cellular network provider. In the CC Pilot™ XS there is a Siemens AC45 modem. Contact your cellular network provider for information on issuing the right AT-command.

- » Press *Next*.
- » Type in the telephone number which you would like to call and press *Finish*.

Establish a connection

The connection that was created above can now be found under *Network and Dial-up Connections*. To establish a link, open the connection, after which a username and password may need to be given. Then press *Connect* to place the call.



Note that to place a call with the modem, the SIM card must have been configured so that no PIN code is needed.

Depending on the cellular network provider and what type of connection is to be made, individual settings may be necessary. Contact your provider or network administrator for the correct settings.

Using the FTP server

CC Pilot™ XS has an in built FTP server to be used for remotely upload or download information from the unit.

The default security settings for FTP is to allow anonymous access, which gives the connecting entity possibilities to upload files, delete files and rename files without authorization. Anyone can log in using the username "anonymous" and any password to gain access.



Be aware that when connecting CC Pilot™ XS to a network the FTP server is open for anyone to access.

Using Telnet server

You can interact remotely with CC Pilot™ XS using the built in Telnet server. The telnet server is accessed using a Telnet application to contact the CC Pilot™ XS using network connection.

No login is needed to logon to the unit.



Be aware that when connecting CC Pilot™ XS to a network the Telnet server is open for anyone to access.

CC Pilot™ XS

Specifications

Computer Core

Core Component	Description	Comments
Processor	Intel XScale, 533 MHz	
Kernel Flash	32 MB Strata flash	For operating system
Compact Flash	1 GB	For application and user data
RAM	256 MB SDRAM	
EEPROM	4+4 KB	Serial
Graphic Controller	Silicon Motion, 8 MB RAM, 2D/3D acceleration	

Interfaces

The composition of the unit is optional, so your CC Pilot™ XS may not be equipped with all interfaces.

E A

E A

A

A

Interface	Description	Comments
CAN	2 pcs. 2.0B, ISO 11898 – 24V	Controller – Intel 82527 Driver –Philips 82C251
USB	2 pcs.	Ver. 2.0
Video in	2 pcs.	Zoomed composite video signal
RS232	1 pcs.	<= 115 000 baud (Limited connector set for CC Pilot XS Extended and All_integrated)
Ethernet	2 pcs.	10/100 Base-T
Touch screen	Resistive Touch screen	8-wire
Digital Input	3 discrete digital inputs, Pull-up(100K, 3.3V)	Option – replaces RS232
GPS	Internal via serial connection, COM 2	12 channel receiver -152 dBm sensitivity NMEA and iTalk 3-m (CEP) accuracy
GSM/GPRS modem	Internal via serial connection, COM 3	Siemens AC45 module

Power Supply

Power Supply	Description	Comments
Supply Voltage	10 to 36 V	
Power Consumption	Max 1A at 24 V	With 10.4" displays. Varies depending on background lighting.

Display

Display	Description	Comments
6,5" VGA	Colour, 640x480, 320 cd/mm*	Aspect Ratio 4:3
10,4" SVGA	Colour, 800x600, 320 cd/mm*	Aspect Ratio 4:3

* Light intensity can be regulated in 32 steps.

A

GPS

GPS	Description	Comments
Type of receiver	L1 frequency, C/A-code, 12-	
Max update frequency	4 Hz	1 Hz default
Accuracy (SA off)	Position 3m CEP (see ¹)	
Time for position information (typical)	Cold start 35 sec (typical) Warm start 38 sec (typical) Fast start <8 sec (typical)	
Sensitivity	-152 dBm (tracking)	
Dynamic	< 4g	
GPS antenna voltage	3.3 V DC	SMA connector

¹ CEP = Circular Error Probability. Means that the given radius of a horizontal circle, centred at the antenna's exact position has a 50% probability of being hit.

A**GSM/GPRS**

GSM/GPRS	Description	Comments
Frequency Band	Dual-band EGSM 900, GSM1800	
Broadcast strength	Class 4 (2W) with EGSM900 Class 1 (1W) with GSM1800	
GPRS	GPRS multi-slot class 8 GPRS mobile station class B	
DATA	GPRS max download speed: 85.6 kbps GPRS upload speed: max. 21.4 kbps CSD transfer speed: 2.4, 4.8, 9.6, 14.4 kbps, V.110	
SMS	MO, CB, Text and PDU	CSD and GPRS can be used for SMS.
FAX	Group 3	class 1, class 2
SIM card interface	3V SIM card	

E**Bluetooth**

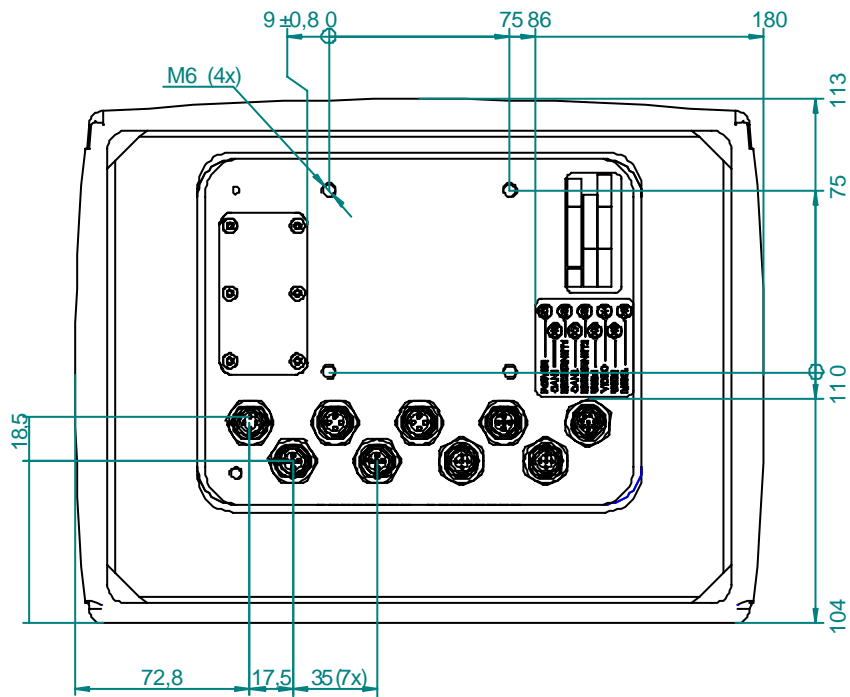
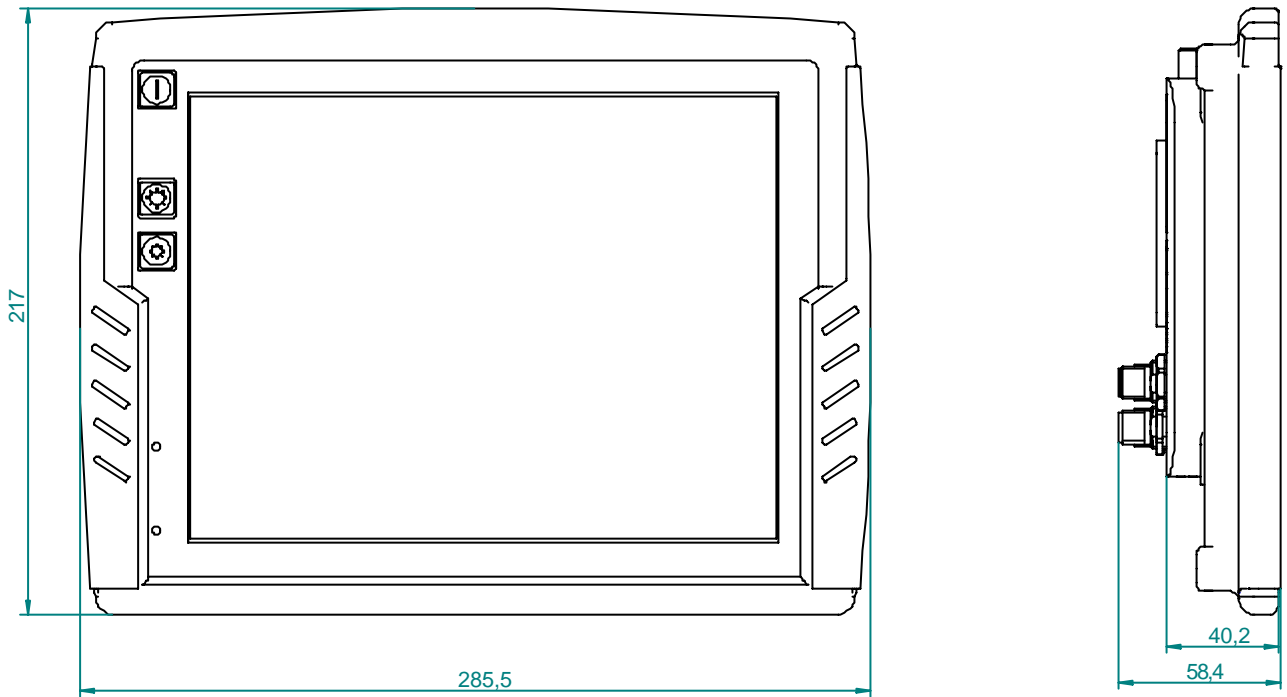
Bluetooth	Description	Comments
Bluetooth Class	1	
Range	Up to 100 m	
Version	2.0 compliant	

Environmental Tolerance

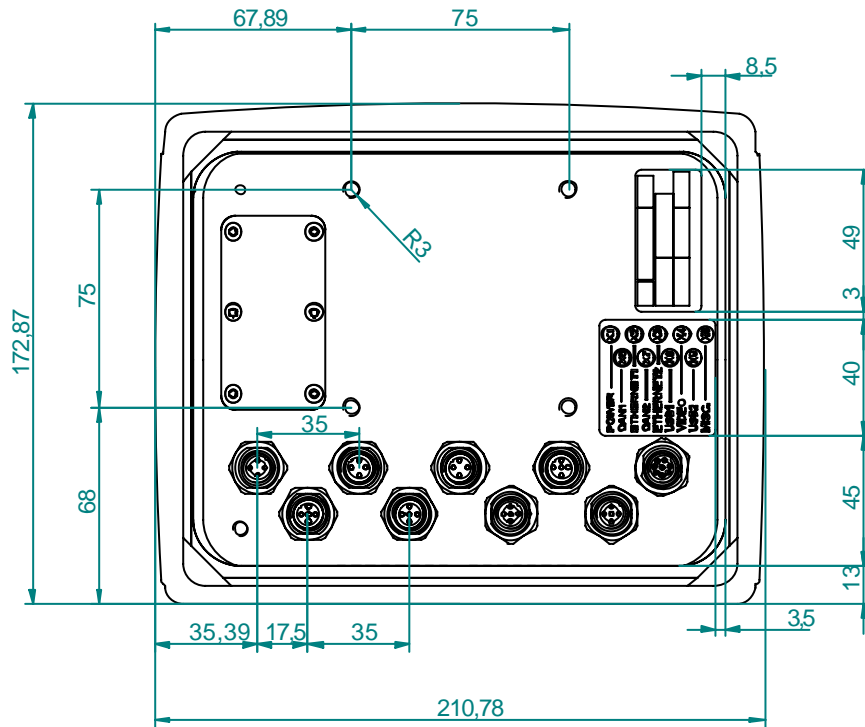
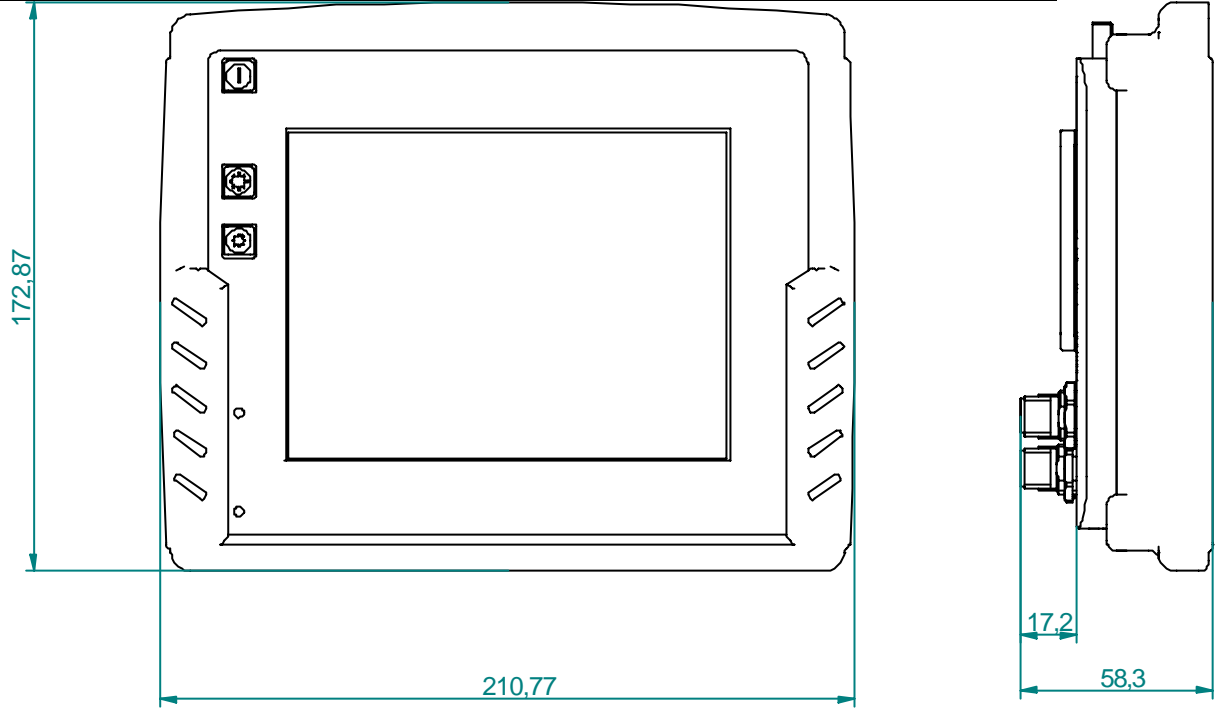
Environmental Test	Standard	Comments
Vibration	IEC 60068-2-64	0,01 g ² /Hz 5-200 Hz 1,39g (RMS) 1h
Shock	IEC 60068-2-27	5 g/30 ms ±3x3
Dry Heat	EN 60068-2-2 Bd	Operating: +65°C, 24h Storage: +70°C, 24h
Damp Heat	EN 60068-2-30 Db	Operation: +25°C / +55 >93% RH 2*24h
Cold	EN 60068-2-1 Ad	Operating: -40°C, 24h Storage: -40°C, 24h
Enclosure	EN 60529	IP67
EMC Directive	2004/108/EC EN 61000-6-2:2001 EN 61000-6-4:2001	
EMC Immunity, Transient	EN 61000-4-4 (Burst) EN 61000-4-5 (Surge)	+/- 2 kV +/- 2 kV
EMC Immunity, ESD	EN 61000-4-2	8 kV air, 4 kV contact
EMC Immunity, RF	EN 61000-4-3 EN 61000-4-6	20 V/m, 80 MHz to 2 GHz 15 V, 15 kHz to 80 MHz
EMC Emission	EN 55022 Class A	Measured from 10 m Radiated: 30 to 230 MHz 40 dBµV/m 230 MHz to 1 GHz 47 dBµV/m Conducted: 9 kHz to 150 kHz 103-83 dBµV 150 kHz to 500 kHz 79 dBµV 500 kHz to 30 MHz 73 dBµV

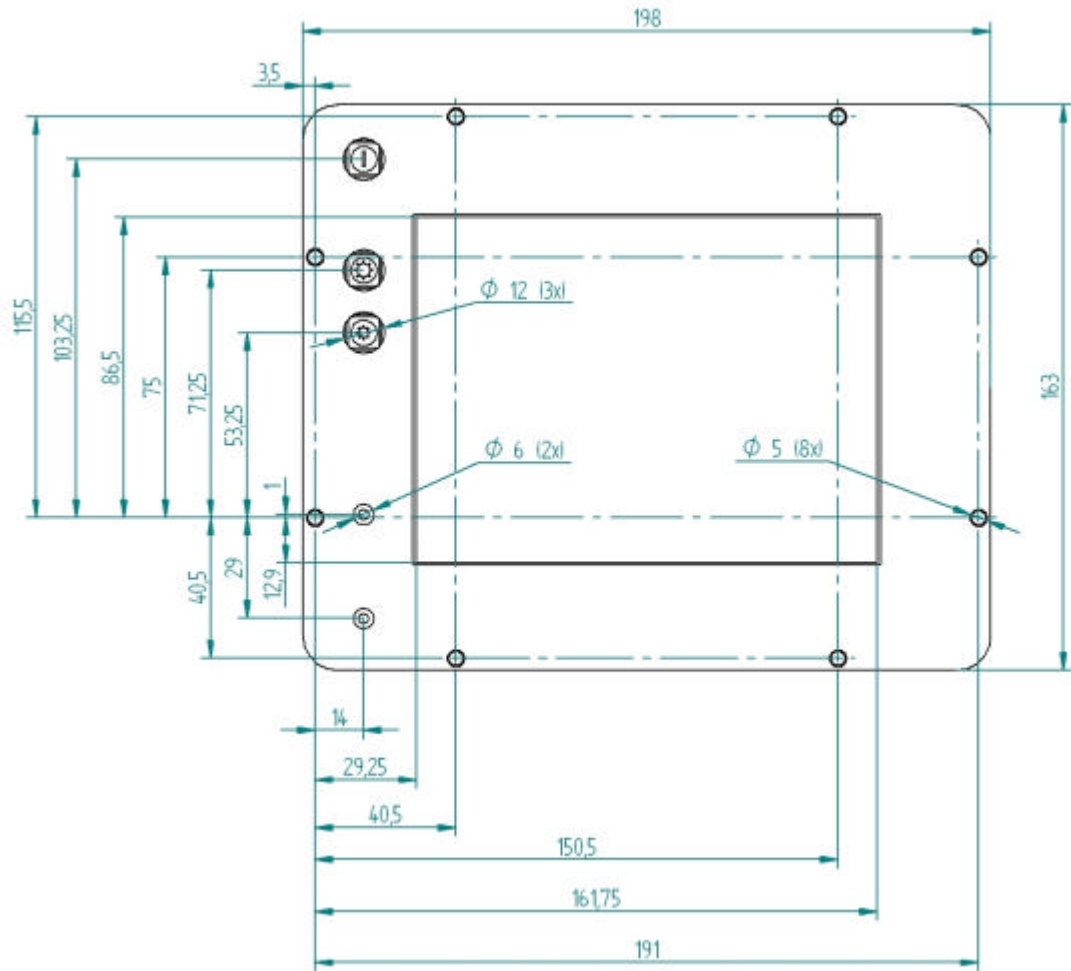
Weight and Dimensions

10.4"	Description	Comments
Enclosure size	285,5 x 217 x 58,4 mm (W x H x D)	Depending on configuration
Display size	210,6 x 159 x 53,8 mm (W x H x D)	
Weight	ca 1.7kg	



6.5"	Description	Comments
Enclosure size	210.8 x 172.9 x 58.4 mm (W x H x D)	Depending on configuration
Display size	198 x 163 x 53.8 mm (W x H x D)	
Weight	ca 1.3 kg	





CC Pilot™ XS

Technical Support

Contact your reseller or supplier for help with possible problems with your CC Pilot™ XS. In order to get the best help, you should have your CC Pilot™ XS in front of you and be prepared with the following information before you contact support.

- » Part number and serial number of the unit, which you find on the brand label
- » Date of purchase, which is found on the invoice
- » The conditions and circumstances under which the problem arises
- » Possible error messages which are shown.
- » Version number of the operating system, which you find via the *Start* menu: go to the *Control Panel* and click on *System*.
- » Information regarding possible external equipment which is connected to the CC Pilot™ XS.

CC Pilot™ XS

Glossary

Bluetooth, is an open standard for wireless communication in the 2.4 GHz range. It is built for low power consumption and is used to connect together units such as cell phone, printer, keyboard, pointing instrument and computer. The range is 10 – 100 m.

bps, bits per second. This is a measurement of how fast data can be sent. Given often as Mbps, or Mb/s (mega-bits per second)

CAN, Controller Area Network. A standard for bus communication to be used in control applications in, for example, vehicles and industry.

CCP, CC Pilot™

COM, is an abbreviation for Communication Port and is usually called the serial port. The serial port can, among other things, be used to connect additional equipment (modem, GPS, etc.) to a PC.

ELFA, an electronic component distributor in northern Europe. For more information see the chapter *References*.

Ethernet, computer networking technology for local area networks (LANs). The name comes from the physical concept of ether. Ethernet is mostly standardized as [IEEEs 802.3](#) and is the most widespread LAN technology.

GPRS, General Packet Radio Service. GPRS is a standard, accepted by the European Standardisation Organisation ETSI, for packet data in GSM and 3G-networks. GPRS has also been adapted for the American cellular telephone standard, TDMA.

GIS, Geographic Information System. Is a general term for programs or systems which contain geographical information such as maps.

GPS, Global Positioning System. System for global positioning.

GSM, Global System for Mobile Communications. A system for mobile telephone communication. There are three different frequency ranges which GSM uses. In today's GSM net data is sent in the same way as normal speech information, which limits the data communication rates. For higher data communication rates additional technology are added, such as GPRS.

The Control Panel, is a program which accompanies your Windows operating system. It is easiest to find by going in through the Start Menu.

LAN, Local Area Network. LAN often concerns the Ethernet standard which is used in local networks.

Notification Area, This is an area which, in a Windows environment, is often found lowest down to the right on the desktop, i.e. beside the clock.

Mbps, Mega bits per second. Mbps is a measurement of how fast data can be sent.

NC, Not Connected. The socket, or a pin in the socket, is without an internal connection and can not be used.

NMEA-0183, Protocol for GPS communication from the National Marine Electronics Association, which was originally developed for marine use but is now an accepted de facto standard for GPS communication in many different regions. See the chapter *References* for the link to NMEA's home page.

SIM, Subscriber Identification Module

TFT, Thin Film Transistor. A method for manufacturing flat-screens displays.

USB, Universal Serial Bus. A standard which has replaced serial and parallel ports on PC units with a faster, more uniform standard. Many different devices can be attached to the USB port, such as a keyboard, mouse, camera and memory, to name only a few examples.

The Explorer, the window in your operating system where you can search through folders and files, etc.

WLAN, stands for wireless LAN, wireless local area network also called Wi-Fi. WLAN is a wireless local area network that uses radio waves to communicate with the mobile device. The range is limited around 100 m, but is highly dependent on surrounding factors. The standard is called IEEE 802.11 and exists in several versions (a, b, g) where the speed, ranging from 2-108 Mbit is the most significant difference.

Intel XScale® A processor technology which draws low current, gives high performance and is well-suited as an embedded processor in small units.

CC Pilot™ XS

References

<http://www.cc-systems.com>
<http://www.ELFA.se/>
<http://www.nmea.org/pub/0183/>
<http://www.hardwarebook.net/>

Trade Mark, etc.

© 2008 CC Systems AB

All trademarks sighted in this document are the property of their respective owners.

CC Pilot is a trademark which is the property of CC Systems AB.
Intel XScale is a registered trademark which is the property of Intel Corporation in the USA and/or other countries. Linux is a registered trademark of Linus Torvalds.
Microsoft and Windows are registered trademarks which belong to Microsoft Corporation in the USA and/or other countries.

CC Systems AB is not responsible for editing errors, technical errors or for material which has been omitted in this document. CC Systems is not responsible for unintentional damage or for damage which occurs as a result of supplying, handling or using of this material. The information in this handbook is supplied without any guarantees and can change without prior notification.

CC Pilot™ XS

Index

A	
Accuracy	44
ActiveSync.....	38
Adapter cables	15
ARM processors	27
AT-command	41
Audio	13, 15
B	
Bluetooth	52
bps	52
Brightness	35
Broadcast strength.....	45
C	
Calibration of Touchscreen.....	10
Camera connection.....	13
CAN	12, 52
CAN	43
CAN1.....	15
CAN2.....	15
CANopen.....	12, 17
CC Video	36
CE.....	27
Cleaning.....	5
Clock.....	28
Cold.....	46
Colour-coding of cable	26
COM.....	13, 15, 18, 52
Communications Port.....	18
Compact flash.....	29
Composite video.....	16
Composite Video.....	13
Computer Core.....	43
Configuration of CC Pilot XS	8
Connect to GPS	40
Connection to the GSM/GPRS modem.....	40
Connectors	15
Contact Support	51
Cooling of the CC Pilot™ XS	21
D	
DHCP	32
Dial-up Connection	40
Digital In	15
Digital Input.....	43
Digital Inputs	13
Display	44
Display size 10.4	47
Display Size 6.5	49
Dynamic.....	44
E	
ELFA	52
EMC	46
Enclosure.....	46
Enclosure size 6.5.....	49
Enclosure size, 10.4	47
Environmental Test.....	46
Environmental Tolerance	5, 46
Ethernet.....	12, 43
Ethernet1	15
Ethernet2.....	15
F	
fastening holes	22
FAX.....	45
Flash Memory.....	43
Frequency band.....	45
G	
Get Connected.....	38
Getting started with Windows CE.....	27
GIS	40, 52
Glossary.....	52
GPRS.....	13, 52
GPS	13, 43, 44, 52
GPS antenna voltage	44
GPS connection	40
GPS receiver.....	40
GPS-receiver	44
Graphic Controller.....	43
GSM	13, 52
GSM/GPRS	43
GSM/GPRS	14
GSM/GPRS	45
GSM/GPRS connection	40
H	
Hard disc.....	12
Heat.....	46
I	
Identification	4
Input lange selection.....	28
Input panel.....	28
Input Panel.....	29
Inputs	15
Installation of CC Pilot™ XS.....	21
Installation of software.....	8
Installing the Unit.....	21
Interfaces.....	43
Internal GPS-unit.....	13
Internet Explorer.....	28
K	
Keyboard.....	29
L	
Label.....	4

LAN..... 52
 Light Emitting Diode..... 10
 Linux..... 27

M

Maintenance.....5
 Mbps..... 52
 Memory..... 12
 Minimise all windows 28
 MISC 15
 Modem..... 13
 Module description..... 12
 My Computer 28

N

NC..... 53
 Network Status 28
 NMEA..... 40
 NMEA-0183 standard..... 13
 NMEA-0183 Standard 53
 Notification Area 52
 NTSC 13, 16
 null modem cable..... 38

O

Operating System 27
 Outputs 15
 Overview of the CC Pilot™ XS 6

P

PAL..... 13, 16
 Performance..... 43
 PIN code..... 41
 Pins..... 15
 Placement of the CC Pilot™ XS 21
 Ports..... 15
 Power Consumption..... 44
 Power states 34
 Power Supply..... 44
 Power Supply Cable..... 26
 Power Supply Connector..... 15
 processor..... 43

R

RAM memory..... 43
 Rear View Camera..... 13
 References 54
 replog 39
 Reset the unit..... 11
 RS232..... 18, 43

S

Sensitivity 44
 Settings 32
 Setting-up CC Pilot XS 8

Shock..... 46
 Shutting Down the CC Pilot™ XS 10
 SIM 53
 SMS 45
 Software..... 27
 Software installation..... 8
 Specifications 43
 Start button..... 28
 Status for power supply..... 28
 Status Indication..... 10
 Storage..... 12
 Supply Voltage 44
 Support..... 51
 System memory 29

T

Technical Support..... 51
 Test Standards 5
 TFT 53
 The Control Panel..... 52
 The Explorer 29, 53
 The Network..... 29
 thread depth..... 21
 thread locker..... 22
 torque..... 21, 22
 Touchscreen 10, 43
 Trade Mark..... 54
 Traffic safety 21
 Turning off the CC Pilot™ XS 10

U

USB 13, 15, 53
 USB 43
 USB host mode..... 19
 Using the CC Pilot XS 27

V,W

Warranty 21
 Weight 10.4..... 47
 Weight 6.5 49
 Weight and Dimensions 47
 Welding..... 4
 Vibration..... 46
 Video 15, 43
 Video camera..... 13
 Video Controller..... 43
 Video input..... 15
 Windows CE 27
 WLAN 53
 Volume Control..... 28

X

XS settings..... 32
 XScale..... 53
 Xscale processors 27

Manufacturer contact information

Sales contact	productsales@cc-systems.com	Phone	+46 (0)271 193 80
Address	CC Systems AB	Fax	+46 (0)271 193 89
	Box 83	Web	www.cc-systems.com
	SE-822 22 Alfta	General contact	info@cc-systems.com
	Sweden		

